

Datasheet for ABIN524931
anti-WDTC1 antibody (AA 1-676)



[Go to Product page](#)

2 Images

Overview

Quantity:	50 µg
Target:	WDTC1 (Wdtd1)
Binding Specificity:	AA 1-676
Reactivity:	Human
Host:	Mouse
Clonality:	Polyclonal
Conjugate:	This WDTC1 antibody is un-conjugated
Application:	Western Blotting (WB)

Product Details

Purpose:	Mouse polyclonal antibody raised against a full-length human WDTC1 protein.
Immunogen:	WDTC1 (NP_055838.2, 1 a.a. ~ 676 a.a) full-length human protein.
Sequence:	MAKVNITRDL IRRQIKERGA LSFERRYHVT DPFIRRLGLE AELQGHSGCV NCLEWNEKGD LLASGSDDQH TIVWDPLHHK KLLSMHTGHT ANIFSVKFLP HAGDRILITG AADSKVHVHD LTVKETIHMFGDHTNRVKRI ATAPMWPNTF WSAEDGLIR QYDLRENSKH SEVLIDLTEY CGQLVEAKCL TVNPQDNNCL AVGASGPFVR LYDIRMIHNN RKSMKQSPSA GVHTFCDRQK PLPDGAAQYY VAGHLPVKLP DYNRLRLVLV ATYVTFSPNG TELLVNMGGQ QVYLFDLTYK QRPYTFLLPR KCHSSGVQNG KMSTNGVSNG VSNGHLHLSN GFRLPESRGH VSPQVELPPY LERVKQQANE AFACQQTQA IQLYSKAVQR APHNAMLYGN RAAAYMKRKY DGDHYDALRD CLKAISLNPC HLKAHFRLAR CLFELKYVAE ALECLDDFKG KFPEQAHSSA CDALGRDITA ALFSKNDGEE KKGPGGGAPV RLRSTSRKDS ISEDEMVLRE RSYDYQFRYC GNCNTTTDIK EANFFGSNAQ YIVSGSDDGS FFIWEKETT NLRVQLQGD EIVNCLQPHPS YCFLATSGID

Product Details

PVVRLWNPRP ESEDLTGRVV EDMEGASQAN QRRMNADPLE VMLLNMGYRI TGLSSGGAGA
SDDEDSSEGQ VQCRPS

Cross-Reactivity: Human

Characteristics: Antibody reactive against mammalian transfected lysate.

Target Details

Target: WDTC1 (Wdtd1)

Alternative Name: WDTC1 ([Wdtd1 Products](#))

Background: Full Gene Name: WD and tetratricopeptide repeats 1
Synonyms: ADP,KIAA1037

Gene ID: 23038

NCBI Accession: [NM_015023](#)

Application Details

Application Notes: Optimal working dilution should be determined by the investigator.

Restrictions: For Research Use only

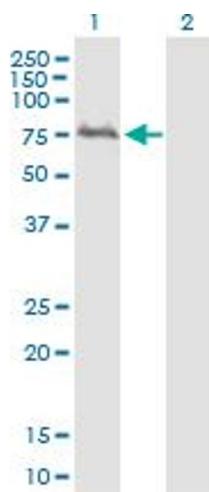
Handling

Buffer: In 1x PBS, pH 7.4

Handling Advice: Aliquot to avoid repeated freezing and thawing.

Storage: -20 °C

Storage Comment: Store at -20°C or lower. Aliquot to avoid repeated freezing and thawing.

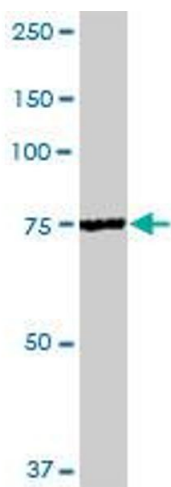


Western Blotting

Image 1. Western Blot analysis of WDC1 expression in transfected 293T cell line by WDC1 MaxPab polyclonal antibody.

Lane 1: WDC1 transfected lysate(74.36 KDa).

Lane 2: Non-transfected lysate.



Western Blotting

Image 2. WDC1 MaxPab polyclonal antibody. Western Blot analysis of WDC1 expression in human stomach.