



[Go to Product page](#)

Datasheet for ABIN524962  
**anti-PEG10 antibody (AA 1-325)**

3 Images

Overview

Quantity:	50 µg
Target:	PEG10
Binding Specificity:	AA 1-325
Reactivity:	Human
Host:	Mouse
Clonality:	Polyclonal
Conjugate:	This PEG10 antibody is un-conjugated
Application:	Western Blotting (WB), Immunofluorescence (IF)

Product Details

Purpose:	Mouse polyclonal antibody raised against a full-length human PEG10 protein.
Immunogen:	PEG10 (NP_001035242.1, 1 a.a. ~ 325 a.a) full-length human protein.
Sequence:	MTERRRDELS EEINNLRKRV MKQSEENNL QSQVQKLTEE NTTLREQVEP TPEDEDDIE LRGAAAAAAP PPPIEEECPD DLPEKFDGNP DMLAPFMAQC QIFMEKSTRD FSVDRVRVCF VTSMMTGRAA RWASAKLERS HYLMHNYPAF MMEMKHVFED PQRREVAKRK IRRLRQGMGS VIDYSNAFQM IAQDLWNEP ALIDQYHEGL SDHIQEELSH LEVAKSLSAL IGQCIHIERR LARAAAARKP RSPPRALVLP HIAHHQVDP TEPVGGARMR LTQEEKERRR KLNLCLYCGT GGHYADNCPA KASKSSPAGN SPAPL
Cross-Reactivity:	Human
Characteristics:	Antibody reactive against mammalian transfected lysate.

## Target Details

Target:	PEG10
Alternative Name:	PEG10 ( <a href="#">PEG10 Products</a> )
Background:	Full Gene Name: paternally expressed 10 Synonyms: Edr,HB-1,KIAA1051,MEF3L,Mar2,Mart2,RGAG3
Gene ID:	23089
NCBI Accession:	<a href="#">NM_001040152</a>

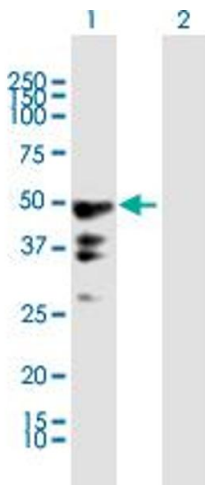
## Application Details

Application Notes:	Optimal working dilution should be determined by the investigator.
Restrictions:	For Research Use only

## Handling

Buffer:	In 1x PBS, pH 7.4
Handling Advice:	Aliquot to avoid repeated freezing and thawing.
Storage:	-20 °C
Storage Comment:	Store at -20°C or lower. Aliquot to avoid repeated freezing and thawing.

## Images

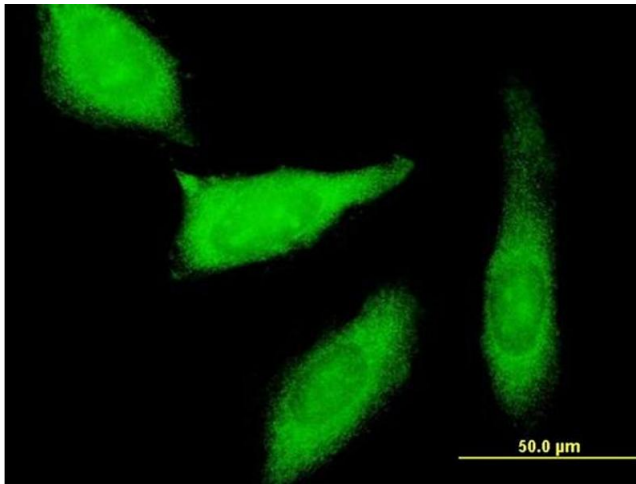


### Western Blotting

**Image 1.** Western Blot analysis of PEG10 expression in transfected 293T cell line by PEG10 MaxPab polyclonal antibody.

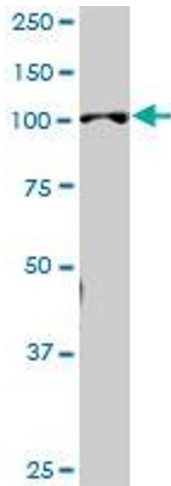
Lane 1: PEG10 transfected lysate(35.75 KDa).

Lane 2: Non-transfected lysate.



### Immunofluorescence

**Image 2.** Immunofluorescence of purified MaxPab antibody to PEG10 on HeLa cell. [antibody concentration 10 ug/ml]



### Western Blotting

**Image 3.** PEG10 MaxPab polyclonal antibody. Western Blot analysis of PEG10 expression in human stomach.