



[Go to Product page](#)

Datasheet for ABIN525025
anti-ARL6IP1 antibody (AA 1-203)

2 Images

Overview

Quantity:	50 µg
Target:	ARL6IP1
Binding Specificity:	AA 1-203
Reactivity:	Human
Host:	Mouse
Clonality:	Polyclonal
Conjugate:	This ARL6IP1 antibody is un-conjugated
Application:	Western Blotting (WB)

Product Details

Purpose:	Mouse polyclonal antibody raised against a full-length human ARL6IP1 protein.
Immunogen:	ARL6IP1 (NP_055976.1, 1 a.a. ~ 203 a.a) full-length human protein.
Sequence:	MAEGDNRSTN LLAETASLE EQLQGWGEVM LMADKVL RWE RAWFPPAIMG VVSLVFLIIY YLDPSVLSGV SCFVMFLCLA DYLVPI LAPR IFGSNKWTTE QQRFHEICS NLVKTRRRAV GWWKRLFTLK EEKPKMYFMT MIVSLAAVAW VGQQVHNLLL TYLIVTSLLL LPGLNQHGII LKYIGMAKRE INKLLKQKEK KNE
Cross-Reactivity:	Human
Characteristics:	Antibody reactive against mammalian transfected lysate.

Target Details

Target:	ARL6IP1
---------	---------

Target Details

Alternative Name:	ARL6IP1 (ARL6IP1 Products)
Background:	Full Gene Name: ADP-ribosylation factor-like 6 interacting protein 1 Synonyms: AIP1,ARL6IP,ARMER,KIAA0069
Gene ID:	23204
NCBI Accession:	NM_015161

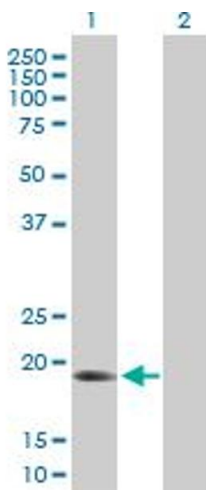
Application Details

Application Notes:	Optimal working dilution should be determined by the investigator.
Restrictions:	For Research Use only

Handling

Buffer:	In 1x PBS, pH 7.4
Handling Advice:	Aliquot to avoid repeated freezing and thawing.
Storage:	-20 °C
Storage Comment:	Store at -20°C or lower. Aliquot to avoid repeated freezing and thawing.

Images

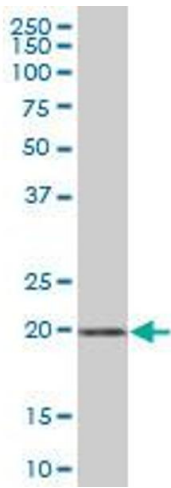


Western Blotting

Image 1. Western Blot analysis of ARL6IP1 expression in transfected 293T cell line by ARL6IP1 MaxPab polyclonal antibody.

Lane 1: ARL6IP transfected lysate(22.33 KDa).

Lane 2: Non-transfected lysate.



Western Blotting

Image 2. ARL6IP MaxPab polyclonal antibody. Western Blot analysis of ARL6IP expression in human liver.