



[Go to Product page](#)

Datasheet for ABIN525033
anti-TBC1D1 antibody (AA 1-1168)

1 Image

Overview

Quantity:	50 µg
Target:	TBC1D1
Binding Specificity:	AA 1-1168
Reactivity:	Human
Host:	Mouse
Clonality:	Polyclonal
Conjugate:	This TBC1D1 antibody is un-conjugated
Application:	Western Blotting (WB)

Product Details

Purpose:	Mouse polyclonal antibody raised against a full-length human TBC1D1 protein.
Immunogen:	TBC1D1 (AAH50321.3, 1 a.a. ~ 1168 a.a) full-length human protein.
Sequence:	MEPITFTARK HLLSNEVSVD FGLQLVGS LP VHSLTTMPML PWVVAEVRRL SRQSTRKEPV TKQVRLCVSP SGLRCEPEPG RSQQWDPLIY SSIFECKPQR VHKLHNSHD PSYFACLIKE DAVHRQSICY VFKADDQTKV PEIISIRQA GKIARQEELH CPSEFDDTFS KKFEVLFCGR VTVAHKKAPP ALIDECIEKF NHVSGSRGSE SPRPNPPHAA PTGSQEPVRR PMRKSFSQPG LRSLAFRKEL QDGLLRSSGF FSSFEEEDIE NHLISGHNIV QPTDIEENRT MLFTIGQSEV YLISPDTKKI ALEKNFKEIS FCSQGIRHVD HFGFICRESS GGGGFHFVCY VFQCTNEALV DEIMMTLKQA FTVAAVQQT A KAPAQLCEGC PLQSLHKLCE RIEGMNSSKT KLELQKHLTT LTNQEATIF EEVQKLRPRN EQRENELIIS FLRCLYEEKQ KEHIHIGEMK QTSQMAAENI GSELPPSATR FRLDMLKNKA KRSLTESLES ILSRGNKARG LQEHISVDL DSSLSTLSN TSKEPSVCEK EALPISESSF KLLGSSEDLS SDESSEHLPEE PAPTSPQQA F RRRANTLSHF

Product Details

PIECQEPPQP ARGSPGVSQR KLMRYHSVST ETPHERKDFE SKANHLGDSG GTPVKTRRHS
WRQQIFLRVA TPQKACDSSS RYEDYSELGE LPPRSLEPV CEDGPFGPPP EEKRTSREL
RELWQKAILK QILLRMEKE NQKLQASEND LLNKRLKLDY EEITPCLKEV TTVWEKMLST
PGRSKIKFDM EKMHSAVGQG VPRHHRGEIW KFLAEQFHLK HQFPSKQPK DVPYKELLKQ
LTSQQHAILI DLGRTFPTHP YFSAQLGAGQ LSLYNILKAY SLLDQEVGYC QGLSFVAGIL
LLHMSEEEAF KMLKFLMFDM GLRKQYRPDM IILQIQMYQL SLLLDYHRD LYNHLEEHEI
GPSLYAAPWF LTMFASQFPL GFVARVFDMI FLQGTEVIFK VALSLLGSHK PLILQHENLE
TIVDFIKSTL PNLGLVQMEK TINQVFEMDI AKQLQAYEVE YHVLQEELID SSPLSDNQRM
DKLEKTNSSL RKQNLDLLEQ LQVANGRIQS LEATIEKLLS SESKQKQAML TLELERSALL
QTVEELRRRS AEPSDREPEC TQPEPTGD

Cross-Reactivity: Human

Characteristics: Antibody reactive against mammalian transfected lysate.

Target Details

Target: TBC1D1

Alternative Name: TBC1D1 ([TBC1D1 Products](#))

Background: Full Gene Name: TBC1 (tre-2/USP6, BUB2, cdc16) domain family, member 1
Synonyms: KIAA1108,TBC,TBC1

Gene ID: 23216

Application Details

Application Notes: Optimal working dilution should be determined by the investigator.

Restrictions: For Research Use only

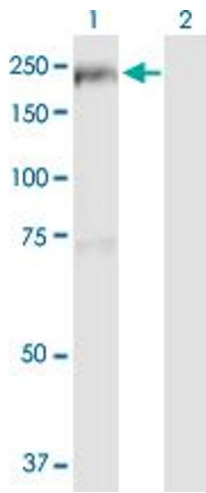
Handling

Buffer: In 1x PBS, pH 7.4

Handling Advice: Aliquot to avoid repeated freezing and thawing.

Storage: -20 °C

Storage Comment: Store at -20°C or lower. Aliquot to avoid repeated freezing and thawing.



Western Blotting

Image 1. Western Blot analysis of TBC1D1 expression in transfected 293T cell line by TBC1D1 MaxPab polyclonal antibody.

Lane 1: TBC1D1 transfected lysate(128.48 kDa).

Lane 2: Non-transfected lysate.