

Datasheet for ABIN525045  
**anti-PLCL2 antibody (AA 121-210)**



[Go to Product page](#)

3 Images

## Overview

Quantity:	100 µg
Target:	PLCL2
Binding Specificity:	AA 121-210
Reactivity:	Human
Host:	Mouse
Clonality:	Monoclonal
Conjugate:	This PLCL2 antibody is un-conjugated
Application:	ELISA, Western Blotting (WB), Immunoprecipitation (IP)

## Product Details

Purpose:	Mouse monoclonal antibody raised against a partial recombinant PLCL2.
Immunogen:	PLCL2 (AAH36392, 121 a.a. ~ 210 a.a) partial recombinant protein with GST tag. MW of the GST tag alone is 26 KDa.
Sequence:	RYLISYGKHT LDMLESSQDN MRTSWVSQMF SEIDVDNLGH ITLCNAVQCI RNLNPGLKTS KIELKFELH KSKDKAGTEV TKEEFIEVFH
Clone:	1C7
Isotype:	IgG2a
Cross-Reactivity:	Human
Characteristics:	Antibody Reactive Against Recombinant Protein.

## Target Details

Target:	PLCL2
Alternative Name:	PLCL2 ( <a href="#">PLCL2 Products</a> )
Background:	Full Gene Name: phospholipase C-like 2 Synonyms: FLJ13484,KIAA1092,PLCE2
Gene ID:	23228

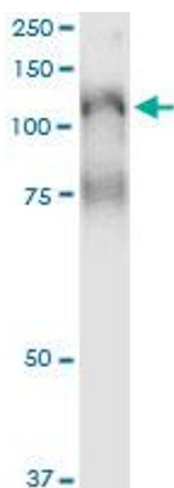
## Application Details

Application Notes:	Optimal working dilution should be determined by the investigator.
Restrictions:	For Research Use only

## Handling

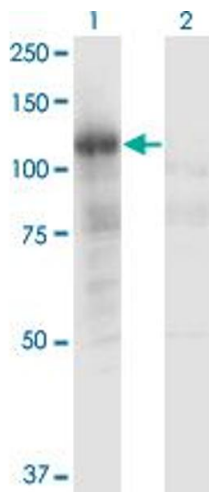
Buffer:	In 1x PBS, pH 7.4
Handling Advice:	Aliquot to avoid repeated freezing and thawing.
Storage:	-20 °C
Storage Comment:	Store at -20°C or lower. Aliquot to avoid repeated freezing and thawing.

## Images



### Immunoprecipitation

**Image 1.** Immunoprecipitation of PLCL2 transfected lysate using anti-PLCL2 monoclonal antibody and Protein A Magnetic Bead , and immunoblotted with PLCL2 monoclonal antibody.

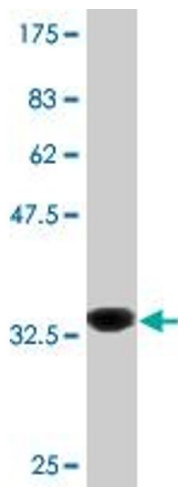


### Western Blotting

**Image 2.** Western Blot analysis of PLCL2 expression in transfected 293T cell line by PLCL2 monoclonal antibody (M02), clone 1C7.

Lane 1: PLCL2 transfected lysate (Predicted MW: 113.7 kDa).

Lane 2: Non-transfected lysate.



### Western Blotting

**Image 3.** Western Blot detection against Immunogen (35.64 kDa).