



Datasheet for ABIN525171
anti-AP4E1 antibody (AA 1038-1137)



[Go to Product page](#)

1 Image

Overview

Quantity:	50 µL
Target:	AP4E1
Binding Specificity:	AA 1038-1137
Reactivity:	Human
Host:	Mouse
Clonality:	Polyclonal
Conjugate:	This AP4E1 antibody is un-conjugated
Application:	Western Blotting (WB), ELISA

Product Details

Purpose:	Mouse polyclonal antibody raised against a partial recombinant AP4E1.
Immunogen:	AP4E1 (NP_031373, 1038 a.a. ~ 1137 a.a) partial recombinant protein with GST tag.
Sequence:	SDDFGKWLWLS FANDVKQNVK MSESQAALPS ALKTLQQKLR LHIIEIIGNE GLLACQLLPS IPCLLHCRVH ADVLALWFRS SCSTLPDYLL YQCQKVMEGS
Cross-Reactivity:	Human
Characteristics:	Antibody Reactive Against Recombinant Protein.

Target Details

Target:	AP4E1
Alternative Name:	AP4E1 (AP4E1 Products)

Target Details

Background:	Full Gene Name: adaptor-related protein complex 4, epsilon 1 subunit Synonyms: DKFZp686L12167
Gene ID:	23431
NCBI Accession:	NM_007347

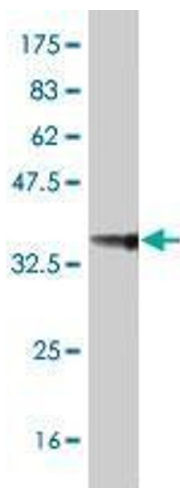
Application Details

Application Notes:	Optimal working dilution should be determined by the investigator.
Restrictions:	For Research Use only

Handling

Format:	Liquid
Buffer:	50 % glycerol
Handling Advice:	Aliquot to avoid repeated freezing and thawing.
Storage:	-20 °C
Storage Comment:	Store at -20°C or lower. Aliquot to avoid repeated freezing and thawing.

Images



Western Blotting

Image 1. Western Blot detection against Immunogen (37.11 KDa) .