



[Go to Product page](#)

Datasheet for ABIN525218  
**anti-MACF1 antibody (AA 1-95)**

3 Images

Overview

Quantity:	100 µg
Target:	MACF1
Binding Specificity:	AA 1-95
Reactivity:	Human
Host:	Mouse
Clonality:	Monoclonal
Conjugate:	This MACF1 antibody is un-conjugated
Application:	ELISA, Western Blotting (WB)

Product Details

Purpose:	Mouse monoclonal antibody raised against a partial recombinant MACF1.
Immunogen:	MACF1 (AAH07330, 1 a.a. ~ 95 a.a) partial recombinant protein with GST tag. MW of the GST tag alone is 26 KDa.
Sequence:	KIEDEVTRQV AQCKCAKRFQ VEQIGENKYR FGDSQQLRLV RILRSTVMVR VGGGWMALDE FLVKNDPCRA RGRTNIELRE KFILPEGASQ GMTPF
Clone:	1G9
Isotype:	IgG1
Cross-Reactivity:	Human
Characteristics:	Antibody Reactive Against Recombinant Protein.

## Target Details

Target:	MACF1
Alternative Name:	MACF1 ( <a href="#">MACF1 Products</a> )
Background:	Full Gene Name: microtubule-actin crosslinking factor 1 Synonyms: ABP620,ACF7,FLJ45612,FLJ46776,KIAA0465,KIAA1251,MACF,OFC4
Gene ID:	23499

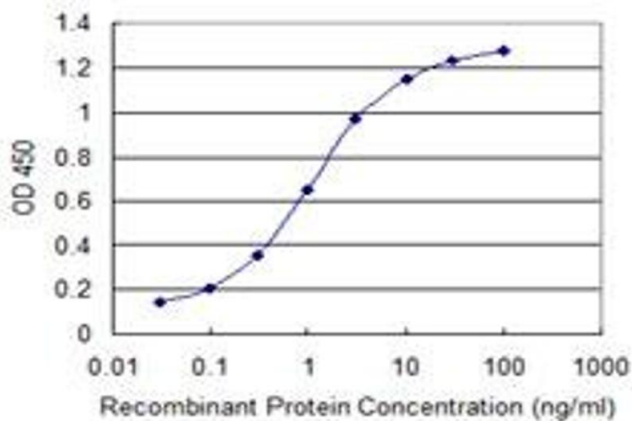
## Application Details

Application Notes:	Optimal working dilution should be determined by the investigator.
Restrictions:	For Research Use only

## Handling

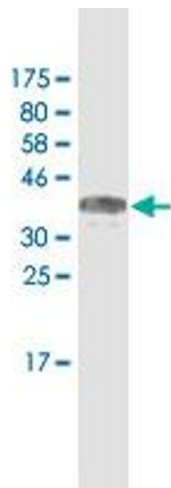
Buffer:	In 1x PBS, pH 7.4
Handling Advice:	Aliquot to avoid repeated freezing and thawing.
Storage:	-20 °C
Storage Comment:	Store at -20°C or lower. Aliquot to avoid repeated freezing and thawing.

## Images



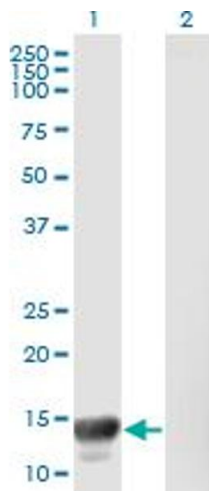
### ELISA

**Image 1.** Detection limit for recombinant GST tagged MACF1 is 0.03 ng/ml as a capture antibody.



### Western Blotting

**Image 2.** Western Blot detection against Immunogen (36.08 KDa) .



### Western Blotting

**Image 3.** Western Blot analysis of MACF1 expression in transfected 293T cell line by MACF1 monoclonal antibody (M08), clone 1G9.

Lane 1: MACF1 transfected lysate(10.45 KDa).

Lane 2: Non-transfected lysate.