



[Go to Product page](#)

Datasheet for ABIN525299

anti-PATZ1 antibody (AA 260-358)

3 Images

Overview

Quantity:	100 µg
Target:	PATZ1 (ZNF278)
Binding Specificity:	AA 260-358
Reactivity:	Human
Host:	Mouse
Clonality:	Monoclonal
Conjugate:	This PATZ1 antibody is un-conjugated
Application:	Western Blotting (WB), ELISA

Product Details

Purpose:	Mouse monoclonal antibody raised against a partial recombinant PATZ1.
Immunogen:	PATZ1 (NP_114440.1, 260 a.a. ~ 358 a.a) partial recombinant protein with GST tag. MW of the GST tag alone is 26 KDa.
Sequence:	PLTGKRGRGR PRKANLLDSM FGSPGGLREA GILPCGLCGK VFTDANRLRQ HEAQHGVTSL QLGYIDLPPP RLGENGLPIS EDPDGPRKRS RTRKQVACE
Clone:	1B2
Isotype:	IgG2b
Cross-Reactivity:	Human
Characteristics:	Antibody Reactive Against Recombinant Protein.

Target Details

Target:	PATZ1 (ZNF278)
Alternative Name:	PATZ1 (ZNF278 Products)
Background:	Full Gene Name: POZ (BTB) and AT hook containing zinc finger 1 Synonyms: MAZR,PATZ,RIAZ,ZBTB19,ZNF278,ZSG,dJ400N23
Gene ID:	23598
NCBI Accession:	NM_032051

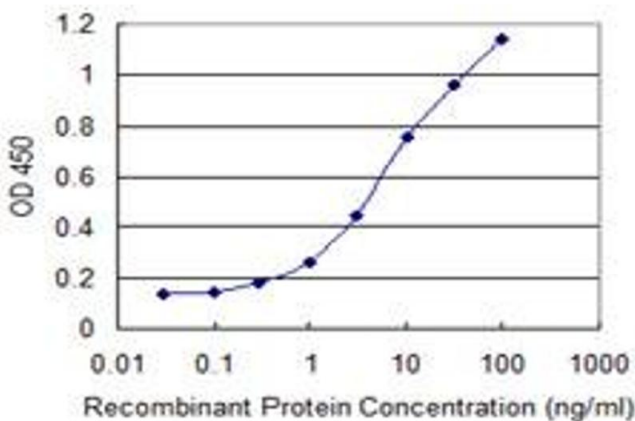
Application Details

Application Notes:	Optimal working dilution should be determined by the investigator.
Restrictions:	For Research Use only

Handling

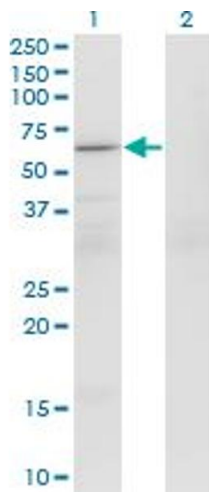
Buffer:	In 1x PBS, pH 7.4
Handling Advice:	Aliquot to avoid repeated freezing and thawing.
Storage:	-20 °C
Storage Comment:	Store at -20°C or lower. Aliquot to avoid repeated freezing and thawing.

Images



ELISA

Image 1. Detection limit for recombinant GST tagged PATZ1 is 0.1 ng/ml as a capture antibody.

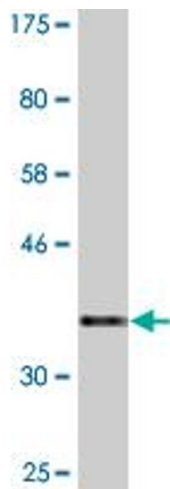


Western Blotting

Image 2. Western Blot analysis of PATZ1 expression in transfected 293T cell line by PATZ1 monoclonal antibody (M01), clone 1B2.

Lane 1: PATZ1 transfected lysate (Predicted MW: 57.6 kDa).

Lane 2: Non-transfected lysate.



Western Blotting

Image 3. Western Blot detection against Immunogen (36.63 kDa).