



[Go to Product page](#)

Datasheet for ABIN525349  
**anti-POLA2 antibody (AA 1-598)**

3 Images

Overview

Quantity:	100 µg
Target:	POLA2
Binding Specificity:	AA 1-598
Reactivity:	Human
Host:	Mouse
Clonality:	Monoclonal
Conjugate:	This POLA2 antibody is un-conjugated
Application:	Western Blotting (WB), ELISA, Immunoprecipitation (IP)

Product Details

Purpose:	Mouse monoclonal antibody raised against a full-length recombinant POLA2.
Immunogen:	POLA2 (AAH01347, 1 a.a. ~ 598 a.a) full-length recombinant protein with GST tag. MW of the GST tag alone is 26 KDa.
Sequence:	MSASAQQLAE ELQIFGLDCE EALIEKLVLEL CVQYGQNEEG MVGELIAFCT STHKVGLTSE ILNSFEHEFL SKRLSKARHS TCKDSGHAGA RDIVSIQELI EVEEEEEILL NSYTTPSKGS QKRAISTPET PLTKRSVSTR SPHQLLSPSS FSPSATPSQK YNSRSNRGEV VTSFGLAQGV SWSGRGGAGN ISLKVLCPE ALTGSYKSMF QKLPDIREVL TCKIEELGSE LKEHYKIEAF TPLLAPAQEP VTLLGQIGCD SNGKLNKSV ILEGDREHSS GAQIPVDLSE LKEYSLFPGQ VVIMEGINTT GRKLVATKLY EGVPLPFYQP TEEDADFEQS MVLVACGPYT TSDSITYDPL LDLIAVINHD RPDVCILFGP FLDKHEQVE NCLLTSPFED IFKQCLRTII EGTRSSGSHL VFVPSLRDVH HEPVYPQPPF SYSDLSREDK KQVQFVSEPC SLSINGVIFG LTSTDLLFHL GAEEISSSSG TSDRFSRILK HILTQRSYYP LYPPQEDMAI DYESFYVYAQ LPVTPDVLII

## Product Details

---

PSELRYFVKD VLGCVCVNPQ RLTKGQVGGT FARLYLRRPA ADGAERQSPC IAVQVVRI

Clone: 2A8

Isotype: IgG1

Cross-Reactivity: Human

Characteristics: Antibody Reactive Against Recombinant Protein.

## Target Details

---

Target: POLA2

Alternative Name: POLA2 ([POLA2 Products](#))

Background: Full Gene Name: polymerase (DNA directed), alpha 2 (70kD subunit)  
Synonyms: FLJ21662,FLJ37250

Gene ID: 23649

Pathways: [Telomere Maintenance](#), [Mitotic G1-G1/S Phases](#), [DNA Replication](#), [Protein targeting to Nucleus](#),  
[Synthesis of DNA](#), [SARS-CoV-2 Protein Interactome](#)

## Application Details

---

Application Notes: Optimal working dilution should be determined by the investigator.

Restrictions: For Research Use only

## Handling

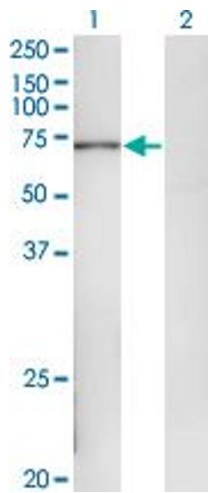
---

Buffer: In 1x PBS, pH 7.4

Handling Advice: Aliquot to avoid repeated freezing and thawing.

Storage: -20 °C

Storage Comment: Store at -20°C or lower. Aliquot to avoid repeated freezing and thawing.

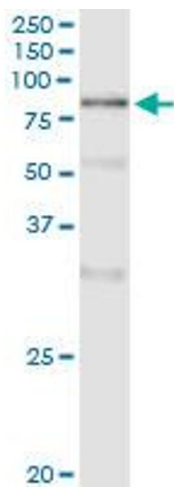


### Western Blotting

**Image 1.** Western Blot analysis of POLA2 expression in transfected 293T cell line by POLA2 monoclonal antibody (M02), clone 2A8.

Lane 1: POLA2 transfected lysate (Predicted MW: 65.9 KDa).

Lane 2: Non-transfected lysate.



### Immunoprecipitation

**Image 2.** Immunoprecipitation of POLA2 transfected lysate using anti-POLA2 monoclonal antibody and Protein A Magnetic Bead, and immunoblotted with POLA2 MaxPab rabbit polyclonal antibody.



### Western Blotting

**Image 3.** Western Blot detection against Immunogen (91.52 KDa).