



[Go to Product page](#)

Datasheet for ABIN525362
anti-TMEFF2 antibody (AA 201-292)

1 Image

Overview

Quantity:	100 µg
Target:	TMEFF2
Binding Specificity:	AA 201-292
Reactivity:	Human
Host:	Mouse
Clonality:	Monoclonal
Conjugate:	This TMEFF2 antibody is un-conjugated
Application:	Western Blotting (WB), ELISA

Product Details

Purpose:	Mouse monoclonal antibody raised against a partial recombinant TMEFF2.
Immunogen:	TMEFF2 (NP_057276.2, 201 a.a. ~ 292 a.a) partial recombinant protein with GST tag. MW of the GST tag alone is 26 KDa.
Sequence:	SYDNACQIKE ASCQKQEKIE VMSLGRCQDN TTTTKSEDG HYARTDYAEN ANKLEESARE HHIPCPEHYN GFCMHGKCEH SINMQEPSCR CD
Clone:	1D12
Isotype:	IgG2a
Cross-Reactivity:	Human
Characteristics:	Antibody Reactive Against Recombinant Protein.

Target Details

Target:	TMEFF2
Alternative Name:	TMEFF2 (TMEFF2 Products)
Background:	Full Gene Name: transmembrane protein with EGF-like and two follistatin-like domains 2 Synonyms: HPP1, TENB2, TPEF, TR
Gene ID:	23671
NCBI Accession:	NM_016192

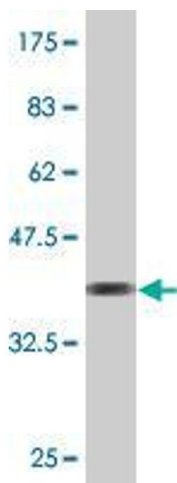
Application Details

Application Notes:	Optimal working dilution should be determined by the investigator.
Restrictions:	For Research Use only

Handling

Buffer:	In 1x PBS, pH 7.4
Handling Advice:	Aliquot to avoid repeated freezing and thawing.
Storage:	-20 °C
Storage Comment:	Store at -20°C or lower. Aliquot to avoid repeated freezing and thawing.

Images



Western Blotting

Image 1. Western Blot detection against Immunogen (35.86 KDa) .