



[Go to Product page](#)

Datasheet for ABIN525371  
**anti-CADM1 antibody (AA 1-387)**

1 Image

Overview

Quantity:	100 µg
Target:	CADM1
Binding Specificity:	AA 1-387
Reactivity:	Human
Host:	Rabbit
Clonality:	Polyclonal
Conjugate:	This CADM1 antibody is un-conjugated
Application:	Western Blotting (WB)

Product Details

Purpose:	Rabbit polyclonal antibody raised against a full-length human CADM1 protein.
Immunogen:	CADM1 (AAH47021.1, 1 a.a. ~ 387 a.a) full-length human protein.
Sequence:	MASVVLPSGS QCAAAAAAAAA PPGLRLRLLL LLFSAAALIP TGDGQNLFTK DVTVIEGEVA TISCQVNKSD DSVIQLLNPN RQTIYFRDFR PLKDSRFQLL NFSSSELKVS LTNVSISDEG RYFCQLYTDP PQESYTTITV LVPPRNLMID IQKDTAVEGE EIEVNCTAMA SKPATTIRWF KGNTEKKGKS EEEWSDMYT VTSQLMLKVH KEDDGVPVIC QVEHPAVTGN LQTQRYLEVQ YKPQVHIQMT YPLQGLTREG DALELTCEAI GKPQPVMVTW VRVDDEMPQH AVLSGPNLFI NNLNKTDNGT YRCEASNIVG KAHSYMLYV YDSRAGEEGS IRAVDHAVIG GVVAVVVFAM LCLLIILGRY FARHKGLFSL TSSPRIK
Cross-Reactivity:	Human
Characteristics:	Antibody reactive against mammalian transfected lysate.

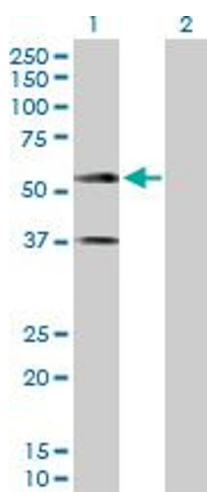
## Target Details

Target:	CADM1
Alternative Name:	CADM1 ( <a href="#">CADM1 Products</a> )
Background:	Full Gene Name: cell adhesion molecule 1 Synonyms: BL2,DKFZp686F1789,IGSF4,IGSF4A,MGC149785,MGC51880,NECL2,Necl-2,RA175,ST17,SYNCAM,TSLC1,sTSLC-1,sglGSF,synCAM1
Gene ID:	23705
Pathways:	<a href="#">Regulation of Leukocyte Mediated Immunity</a> , <a href="#">Positive Regulation of Immune Effector Process</a> , <a href="#">Cell-Cell Junction Organization</a> , <a href="#">Activated T Cell Proliferation</a>

## Application Details

Application Notes:	Optimal working dilution should be determined by the investigator.
Restrictions:	For Research Use only
Handling	
Buffer:	In 1x PBS, pH 7.4
Handling Advice:	Aliquot to avoid repeated freezing and thawing.
Storage:	-20 °C
Storage Comment:	Store at -20°C or lower. Aliquot to avoid repeated freezing and thawing.

## Images



### Western Blotting

**Image 1.** Western Blot analysis of CADM1 expression in transfected 293T cell line by CADM1 MaxPab polyclonal antibody.

Lane 1: CADM1 transfected lysate(42.70 KDa).

Lane 2: Non-transfected lysate.