



Datasheet for ABIN525475
anti-LETMD1 antibody (AA 1-360)



[Go to Product page](#)

1 Image

Overview

Quantity:	50 µg
Target:	LETMD1
Binding Specificity:	AA 1-360
Reactivity:	Human
Host:	Mouse
Clonality:	Polyclonal
Conjugate:	This LETMD1 antibody is un-conjugated
Application:	Western Blotting (WB)

Product Details

Purpose:	Mouse polyclonal antibody raised against a full-length human LETMD1 protein.
Immunogen:	LETMD1 (NP_056231.3, 1 a.a. ~ 360 a.a) full-length human protein.
Sequence:	MALSRVCWAR SAVWGSVTP GHFVTRRLQL GRSGLAWGAP RSSKLHLSPK ADVKNLMSYV VTKTKAINGK YHRFLGRHFP RFYVLYTIFM KGLQMLWADA KKARRIKTNM WKHNIKFHQL PYREMEHLRQ FRQDVTCKLF LGIISPPFA NYLVFLLMYL FPRQLLIRHF WTPKQQTDFL DIYHAFRKQS HPEIISYLEK VIPLISDAGL RWRLTDLCTK IQRGTHPAIH DILALRECFS NHPLGMNQLQ ALHVKALSRA MLLTSYLP PP LLRHRLKTH TTVIHQLDKAL AKLGIGQLTA QEVKSACYLR GLNSTHIGED RCRTWLGEWL QISCSLKEAE LLLLLHNVVL LSTNYLGTRR
Cross-Reactivity:	Human
Characteristics:	Antibody reactive against mammalian transfected lysate.

Target Details

Target: LETMD1

Alternative Name: LETMD1 ([LETMD1 Products](#))

Background: Full Gene Name: LETM1 domain containing 1
Synonyms: 1110019013Rik,DKFZp586A011,HCCR-2,HCCR1

Gene ID: 25875

NCBI Accession: [NM_015416](#)

Application Details

Application Notes: Optimal working dilution should be determined by the investigator.

Restrictions: For Research Use only

Handling

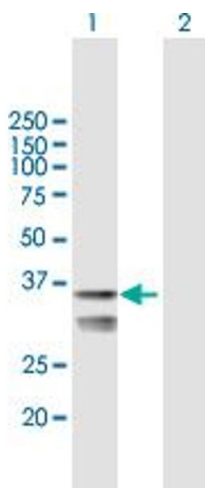
Buffer: In 1x PBS, pH 7.4

Handling Advice: Aliquot to avoid repeated freezing and thawing.

Storage: -20 °C

Storage Comment: Store at -20°C or lower. Aliquot to avoid repeated freezing and thawing.

Images



Western Blotting

Image 1. Western Blot analysis of LETMD1 expression in transfected 293T cell line by LETMD1 MaxPab polyclonal antibody.

Lane 1: LETMD1 transfected lysate(39.6 KDa).

Lane 2: Non-transfected lysate.