



[Go to Product page](#)

Datasheet for ABIN525493

anti-RCHY1 antibody (AA 1-252)

2 Images

Overview

Quantity:	100 µg
Target:	RCHY1
Binding Specificity:	AA 1-252
Reactivity:	Human
Host:	Rabbit
Clonality:	Polyclonal
Conjugate:	This RCHY1 antibody is un-conjugated
Application:	Western Blotting (WB)

Product Details

Purpose:	Rabbit polyclonal antibody raised against a full-length human RCHY1 protein.
Immunogen:	RCHY1 (NP_001009922.1, 1 a.a. ~ 252 a.a) full-length human protein.
Sequence:	MAATAREDGA SGQERGQRGC EHYDRGCLLK APCCDKLYTC RLCHDNNEHD QLDRFKVKEV QCINCEKIQH AQTCEECS LFGEYYCDIC HLFDKDKKQY HCENCGICRI GPKEDFFHCL KCNLCLAMNL QGRHKCIENV SRQNCPILE DIHTSRVVAH VLPCGHLLHR GYRCPLCMHS ALDMTRYWRQ LDDEVAQTPM PSEYQNMTVD ILCNDCNGRS TVQFHILGMK CKICESYN TA QAGGRRISLD QQ
Cross-Reactivity:	Human
Characteristics:	Antibody reactive against mammalian transfected lysate.

Target Details

Target:	RCHY1
Alternative Name:	RCHY1 (RCHY1 Products)
Background:	Full Gene Name: ring finger and CHY zinc finger domain containing 1 Synonyms: ARNIP,CHIMP,DKFZp586C1620,PIRH2,PRO1996,RNF199,ZNF363,hARNIP
Gene ID:	25898
NCBI Accession:	NM_001009922

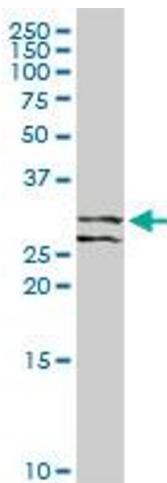
Application Details

Application Notes:	Optimal working dilution should be determined by the investigator.
Restrictions:	For Research Use only

Handling

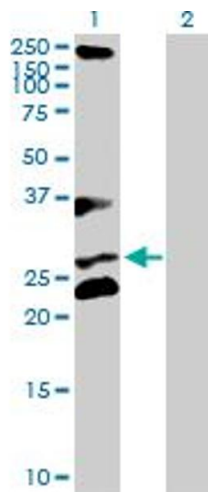
Buffer:	In 1x PBS, pH 7.4
Handling Advice:	Aliquot to avoid repeated freezing and thawing.
Storage:	-20 °C
Storage Comment:	Store at -20°C or lower. Aliquot to avoid repeated freezing and thawing.

Images



Western Blotting

Image 1. RCHY1 MaxPab rabbit polyclonal antibody.
Western Blot analysis of RCHY1 expression in human liver.



Western Blotting

Image 2. Western Blot analysis of RCHY1 expression in transfected 293T cell line by RCHY1 MaxPab polyclonal antibody.

Lane 1: RCHY1 transfected lysate(29.00 kDa).

Lane 2: Non-transfected lysate.