

Datasheet for ABIN525498  
**anti-COBRA1 antibody (AA 1-475)**



[Go to Product page](#)

2 Images

Overview

Quantity:	100 µg
Target:	COBRA1
Binding Specificity:	AA 1-475
Reactivity:	Human
Host:	Rabbit
Clonality:	Polyclonal
Conjugate:	This COBRA1 antibody is un-conjugated
Application:	Western Blotting (WB)

Product Details

Purpose:	Rabbit polyclonal antibody raised against a full-length human COBRA1 protein.
Immunogen:	COBRA1 (AAH11892.1, 1 a.a. ~ 475 a.a) full-length human protein.
Sequence:	MPSLQPVVMC VMKHLPKVPE KKLKLVMA DK ELYRACAVEV KRQIWQDNQA LFGDEVSPLL KQYILEKESA Lfstelsvlh NFFSPSPKTR RQGEVVQRLT RMVGKNVKLY DMVLQFLRTL FLRTRNVHYC TLRAELLSL HDLDVGEICT VDPCHKFTWC LDACIRERFV DSKRARELQG FLDGVKKGQE QVLGDLSMIL CDPFAINTLA LSTVRHLQEL VGQETLPRDS PDL L L L L L RLL ALGQGAWDMI DSQVFKEPKM EVELITRFLP MLMSFLVDDY TFNVDQKLP A EEKAPVSYPN TLPESFTKFL QEQRMACEVG LYYVLHITKQ RNKNALLRLL PGLVETFGDL AFGDIFLHLL TGNLALLADE FALEDFCSSL FDGFFLTASP RKENVHRHAL RLLIHLHPRV APSKLEALQK ALEPTGQSGE AVKELYSQLG EKLEQLDHRK PSPAQA AETP ALELPLPSVP APAPL
Cross-Reactivity:	Human

## Product Details

Characteristics: Antibody reactive against mammalian transfected lysate.

## Target Details

Target: COBRA1

Alternative Name: COBRA1 ([COBRA1 Products](#))

Background: Full Gene Name: cofactor of BRCA1  
Synonyms: DKFZp586B0519,KIAA1182,NELF-B,NELFB

Gene ID: 25920

## Application Details

Application Notes: Optimal working dilution should be determined by the investigator.

Restrictions: For Research Use only

## Handling

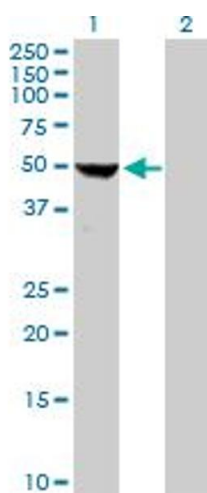
Buffer: In 1x PBS, pH 7.4

Handling Advice: Aliquot to avoid repeated freezing and thawing.

Storage: -20 °C

Storage Comment: Store at -20°C or lower. Aliquot to avoid repeated freezing and thawing.

## Images

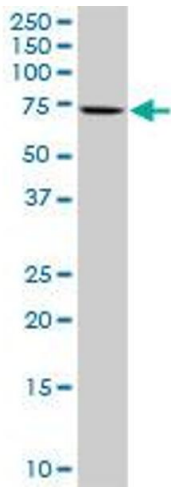


### Western Blotting

**Image 1.** Western Blot analysis of COBRA1 expression in transfected 293T cell line by COBRA1 MaxPab polyclonal antibody.

Lane 1: COBRA1 transfected lysate(53.90 KDa).

Lane 2: Non-transfected lysate.



### Western Blotting

**Image 2.** COBRA1 MaxPab rabbit polyclonal antibody.  
Western Blot analysis of COBRA1 expression in HeLa.