



[Go to Product page](#)

Datasheet for ABIN525503  
**anti-WWTR1 antibody (AA 201-300)**

3 Images

Overview

Quantity:	100 µg
Target:	WWTR1
Binding Specificity:	AA 201-300
Reactivity:	Human
Host:	Mouse
Clonality:	Monoclonal
Conjugate:	This WWTR1 antibody is un-conjugated
Application:	Western Blotting (WB), ELISA, Immunohistochemistry (Paraffin-embedded Sections) (IHC (p))

Product Details

Purpose:	Mouse monoclonal antibody raised against a partial recombinant WWTR1.
Immunogen:	WWTR1 (NP_056287.1, 201 a.a. ~ 300 a.a) partial recombinant protein with GST tag. MW of the GST tag alone is 26 KDa.
Sequence:	PSTLSQQNHP TQNPPAGLMS MPNALTTQQQ QQQKLRQLRI QMERERIRMR QEELMRQEAA LCRQLPMEAE TLAPVQAAVN PPTMTPDMRS ITNNSDPFL
Clone:	1F1
Isotype:	IgG2a
Cross-Reactivity:	Human
Characteristics:	Antibody Reactive Against Recombinant Protein.

## Target Details

Target:	WWTR1
Alternative Name:	WWTR1 ( <a href="#">WWTR1 Products</a> )
Background:	Full Gene Name: WW domain containing transcription regulator 1 Synonyms: DKFZp586l1419,TAZ
Gene ID:	25937
NCBI Accession:	<a href="#">NM_015472</a>
Pathways:	<a href="#">Regulation of Lipid Metabolism by PPARalpha</a>

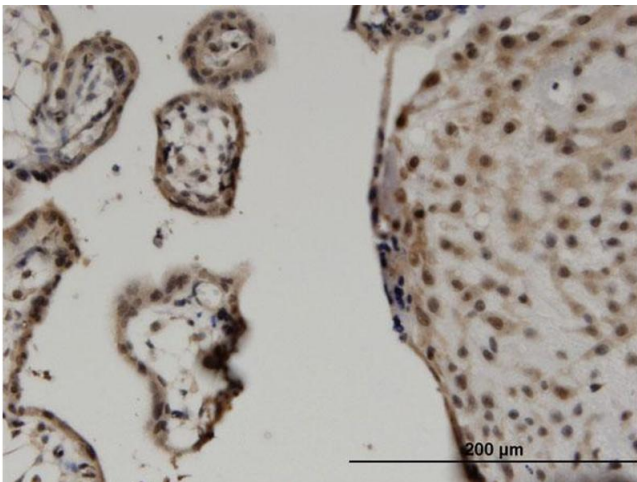
## Application Details

Application Notes:	Optimal working dilution should be determined by the investigator.
Restrictions:	For Research Use only

## Handling

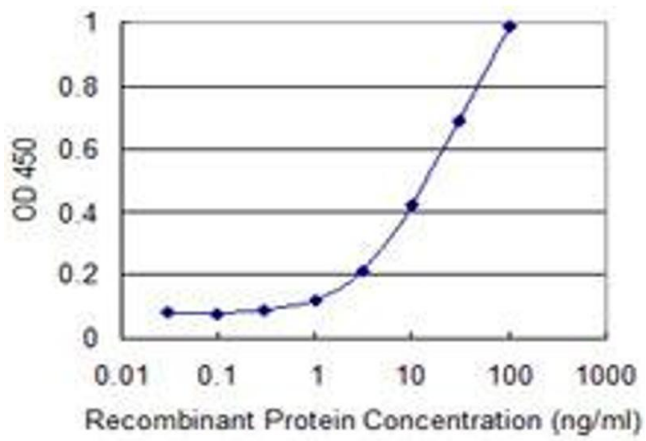
Buffer:	In 1x PBS, pH 7.4
Handling Advice:	Aliquot to avoid repeated freezing and thawing.
Storage:	-20 °C
Storage Comment:	Store at -20°C or lower. Aliquot to avoid repeated freezing and thawing.

## Images



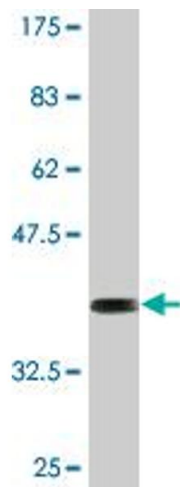
### Immunostaining

**Image 1.** Immunoperoxidase of monoclonal antibody to WWTR1 on formalin-fixed paraffin-embedded human placenta. [antibody concentration 3 ug/ml]



### ELISA

**Image 2.** Detection limit for recombinant GST tagged WWTR1 is 0.3 ng/ml as a capture antibody.



### Western Blotting

**Image 3.** Western Blot detection against Immunogen (36.74 kDa).