

Datasheet for ABIN525522  
**anti-SH2B1 antibody (AA 1-426)**



[Go to Product page](#)

4 Images

Overview

Quantity:	50 µg
Target:	SH2B1
Binding Specificity:	AA 1-426
Reactivity:	Human
Host:	Mouse
Clonality:	Polyclonal
Conjugate:	This SH2B1 antibody is un-conjugated
Application:	Western Blotting (WB), Immunofluorescence (IF)

Product Details

Purpose:	Mouse polyclonal antibody raised against a full-length human SH2B protein.
Immunogen:	SH2B (AAH10704.1, 1 a.a. ~ 426 a.a) full-length human protein.
Sequence:	MVQRELLSF MGAEEAAPDP AGVGRGGGVA GPPSGGGGQP QWQKCRLLLR SEGEGGGGSR LEFFVPPKAS RPRLSIPCSS ITDVRTTAL EMPDRENTFV VKVEGPSEYI METVDAQHVK AWVSDIQECL SPGPCPATSP RPMTLPLAPG TSFLTRENTD SLELSCLNHS ESLPSQDLLL GPSESNDRLS QGAYGGLSDR PSASISPSSA SIAASHFDSM ELLPPELPPR IPIIEGPPAG TVHPLSAPYP PLDTPETATG SFLFQGEPEG GEGDQPLSGY PWFHGMLSRL KAAQLALTGG TGSHGVFLVR QSETRRGEYV LTFNFQGKAK HLRLSLNEEG QCRVQHLWFQ SIFDMLEHFR VHPIPLESGG SSDVVLVSIV PSSQRQQGRE QAGSHAGVCE GDGCHPDASC TLMPPFGASDC VTDHLP
Cross-Reactivity:	Human

## Product Details

Characteristics: Antibody reactive against mammalian transfected lysate.

## Target Details

Target: SH2B1

Alternative Name: SH2B1 ([SH2B1 Products](#))

Background: Full Gene Name: SH2B adaptor protein 1  
Synonyms: DKFZp547G1110,FLJ30542,KIAA1299,SH2-B,SH2B

Gene ID: 25970

## Application Details

Application Notes: Optimal working dilution should be determined by the investigator.

Restrictions: For Research Use only

## Handling

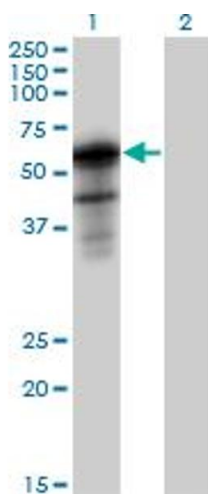
Buffer: In 1x PBS, pH 7.4

Handling Advice: Aliquot to avoid repeated freezing and thawing.

Storage: -20 °C

Storage Comment: Store at -20°C or lower. Aliquot to avoid repeated freezing and thawing.

## Images

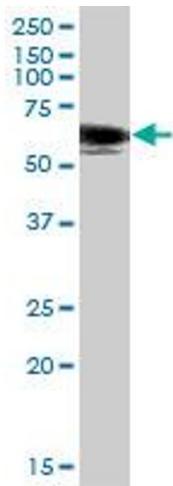


### Western Blotting

**Image 1.** Western Blot analysis of SH2B1 expression in transfected 293T cell line by SH2B1 MaxPab polyclonal antibody.

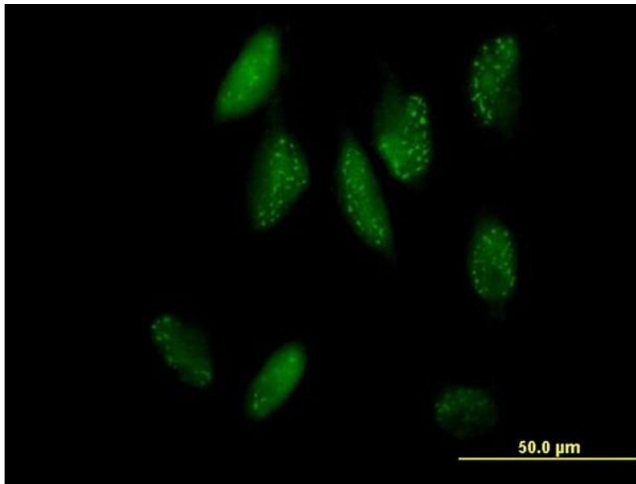
Lane 1: SH2B transfected lysate(46.86 KDa).

Lane 2: Non-transfected lysate.



### Western Blotting

**Image 2.** SH2B MaxPab polyclonal antibody. Western Blot analysis of SH2B expression in human kidney.



### Immunofluorescence

**Image 3.** Immunofluorescence of purified MaxPab antibody to SH2B on HeLa cell. [antibody concentration 10 ug/ml]

Please check the [product details page](#) for more images. Overall 4 images are available for ABIN525522.