



[Go to Product page](#)

Datasheet for ABIN525525
anti-MMACHC antibody (AA 1-225)

2 Images

Overview

Quantity:	100 µg
Target:	MMACHC
Binding Specificity:	AA 1-225
Reactivity:	Human
Host:	Rabbit
Clonality:	Polyclonal
Conjugate:	This MMACHC antibody is un-conjugated
Application:	Western Blotting (WB)

Product Details

Purpose:	Rabbit polyclonal antibody raised against a full-length human MMACHC protein.
Immunogen:	MMACHC (AAH06122.3, 1 a.a. ~ 225 a.a) full-length human protein.
Sequence:	MFDRALKPFL QSCHLRMLTD PVDQCVAYHL GRVRESLPEL QIEIIDYEV HPNRRPKILA QTAAHVAGAA YYYQRQDVEA DPWGNQRISG VCIHPRFGGW FAIRGVLLP GIEVPDLPPR KPHDCVPTRA DRIALLEGFN FHWRDWTYRD AVTPQERYSE EQKAYFSTPP AQLRALLGLA QPSEKPSSPS PDLPFTTPAP KKPGNPSRAR SWLSPRVSPP ASPGP
Cross-Reactivity:	Human
Characteristics:	Antibody reactive against mammalian transfected lysate.

Target Details

Target:	MMACHC
---------	--------

Target Details

Alternative Name:	MMACHC (MMACHC Products)
Background:	Full Gene Name: methylmalonic aciduria (cobalamin deficiency) cblC type, with homocystinuria Synonyms: DKFZp564I122,FLJ25671,RP11-291L19.3
Gene ID:	25974

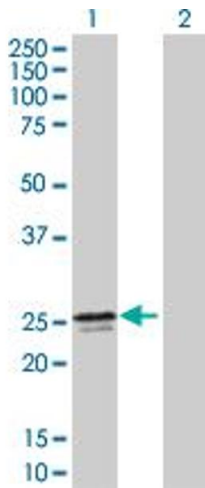
Application Details

Application Notes:	Optimal working dilution should be determined by the investigator.
Restrictions:	For Research Use only

Handling

Buffer:	In 1x PBS, pH 7.4
Handling Advice:	Aliquot to avoid repeated freezing and thawing.
Storage:	-20 °C
Storage Comment:	Store at -20°C or lower. Aliquot to avoid repeated freezing and thawing.

Images

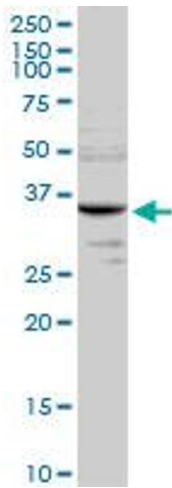


Western Blotting

Image 1. Western Blot analysis of MMACHC expression in transfected 293T cell line by MMACHC MaxPab polyclonal antibody.

Lane 1: MMACHC transfected lysate(25.30 kDa).

Lane 2: Non-transfected lysate.



Western Blotting

Image 2. MMACHC MaxPab rabbit polyclonal antibody. Western Blot analysis of MMACHC expression in human liver.