



[Go to Product page](#)

Datasheet for ABIN525529
anti-C20orf4 antibody (AA 1-384)

1 Image

Overview

Quantity:	50 µL
Target:	C20orf4
Binding Specificity:	AA 1-384
Reactivity:	Human
Host:	Mouse
Clonality:	Polyclonal
Conjugate:	This C20orf4 antibody is un-conjugated
Application:	Western Blotting (WB)

Product Details

Purpose:	Mouse polyclonal antibody raised against a full-length human C20orf4 protein.
Immunogen:	C20orf4 (NP_056326, 1 a.a. ~ 384 a.a) full-length human protein.
Sequence:	MAAVQMDPEL AKRLFFEGAT VVILNMPKGT EFGIDYNSWE VGPKFRGVKM IPPGIHFLHY SSVDKANPKE VGPRMGFFLS LHQRGLTVLR WSTLREEVDL SPAPESEVEA MRANLQELDQ FLGPYPYATL KKWISLTNFI SEATVEKLQP ENRQICAFSD VLPVLSMKHT KDRVGQNLPR CGIECKSYQE GLARLPKMP RAGTEIRFSE LPTQMFPEGA TPAEITKHSM DLSYALETVL NKQFPSSPQD VLGELQFAFV CFLLGNVYEA FEHWKRLNL LCRSEAAMMK HHTLYINLIS ILYHQLGEIP ADFFVDIVSQ DNFLTSTLQV FFSSACSIIV DATLRKKA EK FQAHLTKKFR WDFAAEPEDC APVVVELPEG IEMG
Cross-Reactivity:	Human
Characteristics:	Antibody reactive against mammalian transfected lysate.

Target Details

Target:	C20orf4
Alternative Name:	C20orf4 (C20orf4 Products)
Background:	Full Gene Name: chromosome 20 open reading frame 4 Synonyms: CGI-23,DKFZp564N1363,bA234K24.2
Gene ID:	25980
NCBI Accession:	NM_015511
Pathways:	SARS-CoV-2 Protein Interactome

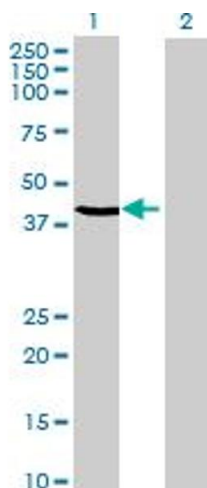
Application Details

Application Notes:	Optimal working dilution should be determined by the investigator.
Restrictions:	For Research Use only

Handling

Format:	Liquid
Buffer:	No additive
Preservative:	Without preservative
Handling Advice:	Aliquot to avoid repeated freezing and thawing.
Storage:	-20 °C
Storage Comment:	Store at -20°C or lower. Aliquot to avoid repeated freezing and thawing.

Images



Western Blotting

Image 1. Western Blot analysis of C20orf4 expression in transfected 293T cell line by C20orf4 MaxPab polyclonal antibody.

Lane 1: C20orf4 transfected lysate(42.24 KDa).

Lane 2: Non-transfected lysate.