



[Go to Product page](#)

Datasheet for ABIN525586
anti-ABHD12 antibody (AA 1-404)

1 Image

Overview

Quantity:	50 µg
Target:	ABHD12
Binding Specificity:	AA 1-404
Reactivity:	Human
Host:	Mouse
Clonality:	Polyclonal
Conjugate:	This ABHD12 antibody is un-conjugated
Application:	Western Blotting (WB)

Product Details

Purpose:	Mouse polyclonal antibody raised against a full-length human C20orf22 protein.
Immunogen:	C20orf22 (NP_056415.1, 1 a.a. ~ 404 a.a) full-length human protein.
Sequence:	MRKRTEPVAL EHERCAAAGS SSSGSAAAAL DADCRLKQNL RLTGPAAAEP RCAADAGMKR ALGRRKGVWL RLRKILFCVL GLYIAIPFLI KLCPGIQAKL IFLNFVRVPY FIDLKPKQDQ GLNHTCNYL QPEEDVTIGV WHTVPAVWWK NAQKDKQMWY EDALASSHPI ILYLHGNAGT RGGDHRVELY KVLSSLGYHV VTFDYRGWGD SVGTPSERGM TYDALHVFDW IKARSGDNPV YIWGHSLGTG VATNLVRRRC ERETPPDALI LESPFTNIRE EAKSHPF SVI YRYFPGFDWF FLDPITSSGI KFANDENVKH ISCPDLLILHA EDDPVVVFQL GRKLYSIAAP ARSFRDFKVQ FVPFHSDLGY RHKYIYKSPE LPRILRPQQG PGSSPDPSMW SELV
Cross-Reactivity:	Human
Characteristics:	Antibody reactive against mammalian transfected lysate.

Target Details

Target:	ABHD12
Alternative Name:	ABHD12 (ABHD12 Products)
Background:	Full Gene Name: abhydrolase domain containing 12 Synonyms: ABHD12A,BEM46L2,C20orf22,DKFZp434P106,dJ965G21.2
Gene ID:	26090
NCBI Accession:	NM_015600

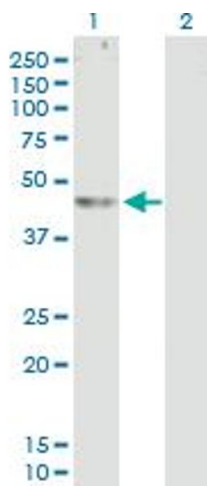
Application Details

Application Notes:	Optimal working dilution should be determined by the investigator.
Restrictions:	For Research Use only

Handling

Buffer:	In 1x PBS, pH 7.4
Handling Advice:	Aliquot to avoid repeated freezing and thawing.
Storage:	-20 °C
Storage Comment:	Store at -20°C or lower. Aliquot to avoid repeated freezing and thawing.

Images



Western Blotting

Image 1. Western Blot analysis of ABHD12 expression in transfected 293T cell line by ABHD12 MaxPab polyclonal antibody.

Lane 1: C20orf22 transfected lysate(44.44 kDa).

Lane 2: Non-transfected lysate.