

Datasheet for ABIN525593
anti-WSB1 antibody (AA 53-137)[Go to Product page](#)

1 Image

Overview

Quantity:	100 µg
Target:	WSB1
Binding Specificity:	AA 53-137
Reactivity:	Human
Host:	Mouse
Clonality:	Monoclonal
Conjugate:	This WSB1 antibody is un-conjugated
Application:	ELISA

Product Details

Purpose:	Mouse monoclonal antibody raised against a partial recombinant WSB1.
Immunogen:	WSB1 (AAH21110.1, 53 a.a. ~ 137 a.a) partial recombinant protein with GST tag. MW of the GST tag alone is 26 KDa.
Sequence:	QGHRTVKLVP WSQCLQNFLH HGTKNVTNSS SLRLPRQNSD GGQKNKPREH IIDCGDIVWS LAFGSSVPEK QSRCVNIEWH RFRFG
Clone:	3E10
Isotype:	IgG2a
Cross-Reactivity:	Human
Characteristics:	Antibody Reactive Against Recombinant Protein.

Target Details

Target:	WSB1
Alternative Name:	WSB1 (WSB1 Products)
Background:	Full Gene Name: WD repeat and SOCS box-containing 1 Synonyms: SWIP1,WSB-1
Gene ID:	26118

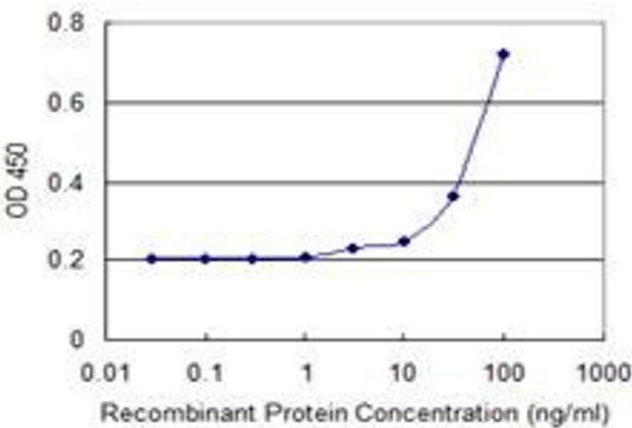
Application Details

Application Notes:	Optimal working dilution should be determined by the investigator.
Restrictions:	For Research Use only

Handling

Buffer:	In 1x PBS, pH 7.4
Handling Advice:	Aliquot to avoid repeated freezing and thawing.
Storage:	-20 °C
Storage Comment:	Store at -20°C or lower. Aliquot to avoid repeated freezing and thawing.

Images



ELISA

Image 1. Detection limit for recombinant GST tagged WSB1 is 10 ng/ml as a capture antibody.