

Datasheet for ABIN525619
anti-GIMAP2 antibody (AA 1-100)



[Go to Product page](#)

2 Images

Overview

Quantity:	100 µg
Target:	GIMAP2
Binding Specificity:	AA 1-100
Reactivity:	Human
Host:	Mouse
Clonality:	Monoclonal
Conjugate:	This GIMAP2 antibody is un-conjugated
Application:	Western Blotting (WB), ELISA

Product Details

Purpose:	Mouse monoclonal antibody raised against a partial recombinant GIMAP2.
Immunogen:	GIMAP2 (NP_056475.1, 1 a.a. ~ 100 a.a) partial recombinant protein with GST tag. MW of the GST tag alone is 26 KDa.
Sequence:	MDQNEHSHWG PHAKGQCASR SELRIILVGK TGTGKSAAGN SILRKQAFES KLGSQTLTKT CSKSQGSWGN REIVIIDTPD MFSWKDHCEA LYKEVQRCYL
Clone:	1E10
Isotype:	IgG2a
Cross-Reactivity:	Human
Characteristics:	Antibody Reactive Against Recombinant Protein.

Target Details

Target:	GIMAP2
Alternative Name:	GIMAP2 (GIMAP2 Products)
Background:	Full Gene Name: GTPase, IMAP family member 2 Synonyms: DKFZp586D0824,HIMAP2,IMAP2,MGC24275
Gene ID:	26157
NCBI Accession:	NM_015660

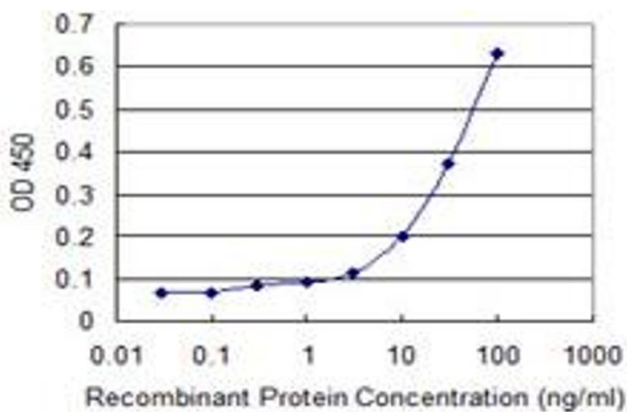
Application Details

Application Notes:	Optimal working dilution should be determined by the investigator.
Restrictions:	For Research Use only

Handling

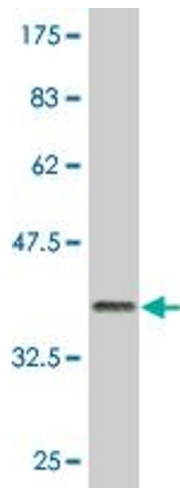
Buffer:	In 1x PBS, pH 7.4
Handling Advice:	Aliquot to avoid repeated freezing and thawing.
Storage:	-20 °C
Storage Comment:	Store at -20°C or lower. Aliquot to avoid repeated freezing and thawing.

Images



ELISA

Image 1. Detection limit for recombinant GST tagged GIMAP2 is 1 ng/ml as a capture antibody.



Western Blotting

Image 2. Western Blot detection against Immunogen (36.74 kDa).