



[Go to Product page](#)

Datasheet for ABIN525623
anti-PTPN22 antibody (AA 10-113)

2 Images

Overview

Quantity:	100 µg
Target:	PTPN22
Binding Specificity:	AA 10-113
Reactivity:	Human
Host:	Mouse
Clonality:	Monoclonal
Conjugate:	This PTPN22 antibody is un-conjugated
Application:	Western Blotting (WB), ELISA, Immunofluorescence (IF)

Product Details

Purpose:	Mouse monoclonal antibody raised against a partial recombinant PTPN22.
Immunogen:	PTPN22 (NP_057051.2, 10 a.a. ~ 113 a.a) partial recombinant protein with GST tag. MW of the GST tag alone is 26 KDa.
Sequence:	FLDEAQSKKI TKEEFANEFL KLKRQSTKYK ADKTYPTTVA EKPKNIKKNR YKDILPYDYS RVESLITSD EDSSYINANF IKGVYGPAY IATQGPLSTT LLDF
Clone:	1A6
Isotype:	IgG2a
Cross-Reactivity:	Human
Characteristics:	Antibody Reactive Against Recombinant Protein.

Target Details

Target:	PTPN22
Alternative Name:	PTPN22 (PTPN22 Products)
Background:	Full Gene Name: protein tyrosine phosphatase, non-receptor type 22 (lymphoid) Synonyms: LYP,Lyp1,Lyp2,PEP,PTPN8
Gene ID:	26191
NCBI Accession:	NM_015967

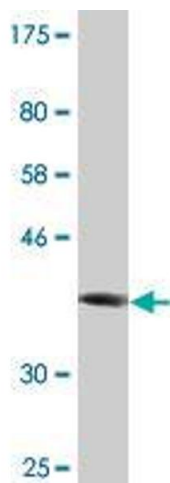
Application Details

Application Notes:	Optimal working dilution should be determined by the investigator.
Restrictions:	For Research Use only

Handling

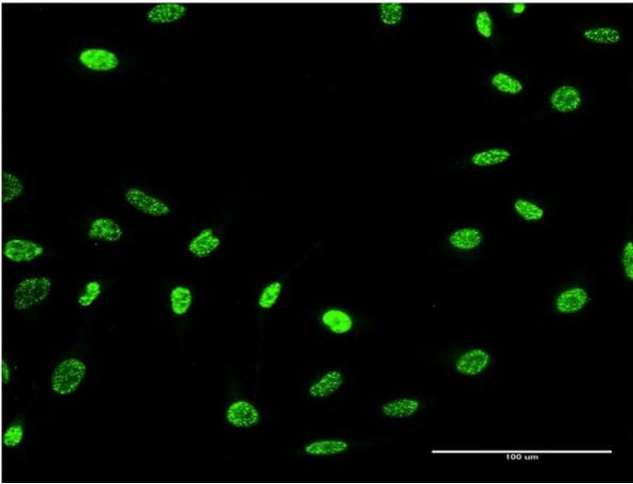
Buffer:	In 1x PBS, pH 7.4
Handling Advice:	Aliquot to avoid repeated freezing and thawing.
Storage:	-20 °C
Storage Comment:	Store at -20°C or lower. Aliquot to avoid repeated freezing and thawing.

Images



Western Blotting

Image 1. Western Blot detection against Immunogen (37.18 KDa) .



Immunofluorescence

Image 2. Immunofluorescence of monoclonal antibody to PTPN22 on HeLa cell. [antibody concentration 10 $\mu\text{g}/\text{ml}$]