



[Go to Product page](#)

Datasheet for ABIN525660
anti-NKX2-8 antibody (AA 1-239)

3 Images

Overview

Quantity:	50 µg
Target:	NKX2-8
Binding Specificity:	AA 1-239
Reactivity:	Human
Host:	Mouse
Clonality:	Polyclonal
Conjugate:	This NKX2-8 antibody is un-conjugated
Application:	Western Blotting (WB), Immunofluorescence (IF)

Product Details

Purpose:	Mouse polyclonal antibody raised against a full-length human NKX2-8 protein.
Immunogen:	NKX2-8 (NP_055175.2, 1 a.a. ~ 239 a.a) full-length human protein.
Sequence:	MATSGRLSFT VRSLDLPEQ DAQHLPREP EPRAPQDPC AAWLDSERGH YPSSDESSLE TSPDSSQRP SARPASPGSD AEKRKKRRVL FSKAQTLELE RFRQQRYS APEREQLASL LRLTPTQVKI WFQNHRYKLRARAPGAAES PDLAASAELH AAPGLLRVVPVLVRDGQP CGGGGGGEVG TAAAEKCGA PPAAACPLPG YPAFGPGSAL GLFPAYQHLA SPALVSWNW
Cross-Reactivity:	Human
Characteristics:	Antibody reactive against mammalian transfected lysate.

Target Details

Target:	NKX2-8
---------	--------

Target Details

Alternative Name:	NKX2-8 (NKX2-8 Products)
Background:	Full Gene Name: NK2 homeobox 8 Synonyms: NKX2.8,NKX2H,Nkx2-9
Gene ID:	26257
NCBI Accession:	NM_014360

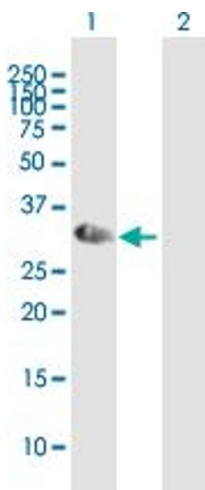
Application Details

Application Notes:	Optimal working dilution should be determined by the investigator.
Restrictions:	For Research Use only

Handling

Buffer:	In 1x PBS, pH 7.4
Handling Advice:	Aliquot to avoid repeated freezing and thawing.
Storage:	-20 °C
Storage Comment:	Store at -20°C or lower. Aliquot to avoid repeated freezing and thawing.

Images

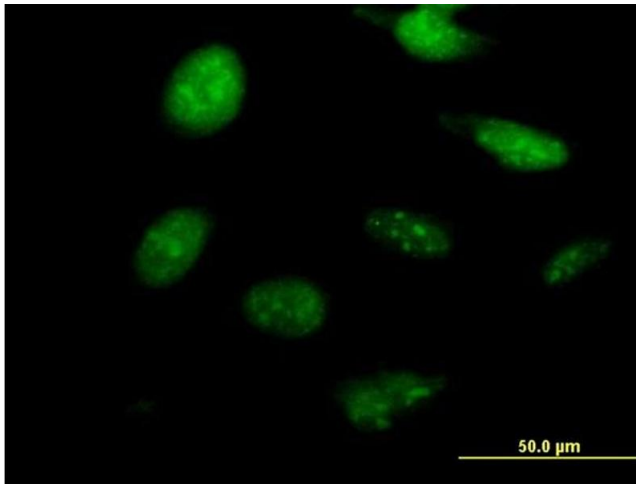


Western Blotting

Image 1. Western Blot analysis of NKX2-8 expression in transfected 293T cell line by NKX2-8 MaxPab polyclonal antibody.

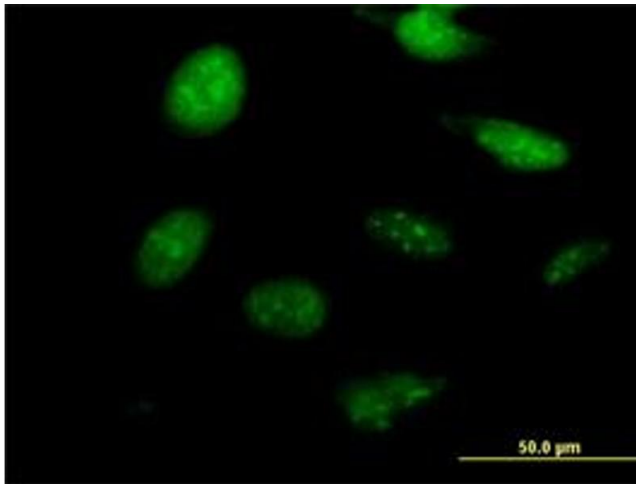
Lane 1: NKX2-8 transfected lysate(26.29 KDa).

Lane 2: Non-transfected lysate.



Immunofluorescence

Image 2. Immunofluorescence of purified MaxPab antibody to NKX2-8 on HeLa cell. [antibody concentration 10 μ g/ml]



Immunofluorescence

Image 3. Immunofluorescence of purified MaxPab antibody to NKX2-8 on HeLa cell. (antibody concentration 10 μ g/mL)