



[Go to Product page](#)

Datasheet for ABIN525750
anti-ITGB1BP2 antibody (AA 246-319)

2 Images

Overview

Quantity:	100 µg
Target:	ITGB1BP2
Binding Specificity:	AA 246-319
Reactivity:	Human
Host:	Mouse
Clonality:	Monoclonal
Conjugate:	This ITGB1BP2 antibody is un-conjugated
Application:	ELISA, Western Blotting (WB)

Product Details

Purpose:	Mouse monoclonal antibody raised against a partial recombinant ITGB1BP2.
Immunogen:	ITGB1BP2 (NP_036410, 246 a.a. ~ 319 a.a) partial recombinant protein with GST tag. MW of the GST tag alone is 26 KDa.
Sequence:	KASQTELVHVH IVFDGNRVFQ AQMKLWGVIN VEQSSVFLMP SRVEISLVKA DPGSWAQL PDALAKKARA GVVL
Clone:	3G9
Isotype:	IgG2a
Cross-Reactivity:	Human
Characteristics:	Antibody Reactive Against Recombinant Protein.

Target Details

Target:	ITGB1BP2
Alternative Name:	ITGB1BP2 (ITGB1BP2 Products)
Background:	Full Gene Name: integrin beta 1 binding protein (melusin) 2 Synonyms: CHORDC3,ITGB1BP,MELUSIN,MGC119214,MSTP015
Gene ID:	26548
NCBI Accession:	NM_012278

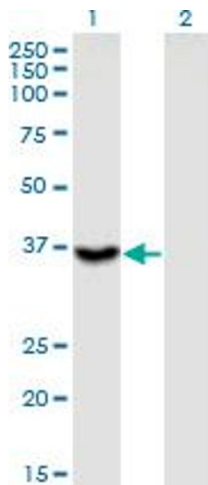
Application Details

Application Notes:	Optimal working dilution should be determined by the investigator.
Restrictions:	For Research Use only

Handling

Buffer:	In 1x PBS, pH 7.4
Handling Advice:	Aliquot to avoid repeated freezing and thawing.
Storage:	-20 °C
Storage Comment:	Store at -20°C or lower. Aliquot to avoid repeated freezing and thawing.

Images

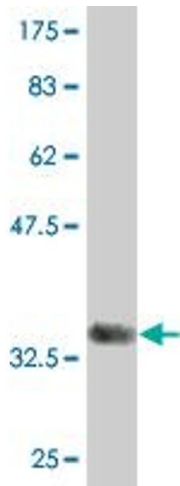


Western Blotting

Image 1. Western Blot analysis of ITGB1BP2 expression in transfected 293T cell line by ITGB1BP2 monoclonal antibody (M02), clone 3G9.

Lane 1: ITGB1BP2 transfected lysate (Predicted MW: 38.4 KDa).

Lane 2: Non-transfected lysate.



Western Blotting

Image 2. Western Blot detection against Immunogen (33.88 KDa).