

Datasheet for ABIN525820
anti-Double-stranded RNA-binding protein Staufen homolog 2 (STAU2) (AA 1-479) antibody



[Go to Product page](#)

2 Images

Overview

Quantity:	100 µg
Target:	Double-stranded RNA-binding protein Staufen homolog 2 (STAU2)
Binding Specificity:	AA 1-479
Reactivity:	Human
Host:	Rabbit
Clonality:	Polyclonal
Conjugate:	Un-conjugated
Application:	Western Blotting (WB), Immunofluorescence (IF)

Product Details

Purpose:	Rabbit polyclonal antibody raised against a full-length human STAU2 protein.
Immunogen:	STAU2 (NP_055208.1, 1 a.a. ~ 479 a.a) full-length human protein.
Sequence:	MLQINQMFSV QLSLGEQTWE SEGSSIKKAQ QAVANKALTE STLPKPVQKP PKSNVNNNPG SITPTVELNG LAMKRGPAI YRPLDPKFP NYRANYNFRG MYNQRYHCPV PKIFYVQLTV GNNEFFGEGK TRQAARHNAA MKALQALQNE PIPERSPQNG ESGKDMDDDK DANKSEISLV FEIALKRNMP VSFEVIKESG PPHMKSFVTR VSVGFEFSAEG EGNSKLLSKK RAATTVLQEL KKLPPLPVVE KPKLFFKKRP KTIVKAGPEY GQGMNPISRL AQIQQAKKEK EPDYVLLSER GMPRRREFVM QVKVGNEVAT GTGPNKKIAK KNAAEAMLLQ LGYKASTNLQ DQLEKTGENK GWSGPKPGFP EPTNNTPKGI LHLSPDVYQE MEASRHKVIS GTTLGYLSPK DMNQPSSSFF SISPTSNSSA TIARELLMNG TSSTAEAIGL KGSSPTPPCS PVQPSKQLEY LARIQGFQV
Cross-Reactivity:	Human

Product Details

Characteristics: Antibody reactive against mammalian transfected lysate.

Target Details

Target: Double-stranded RNA-binding protein Staufen homolog 2 (STAU2)

Alternative Name: STAU2 ([STAU2 Products](#))

Background: Full Gene Name: staufen, RNA binding protein, homolog 2 (Drosophila)
Synonyms: 39K2,39K3,DKFZp781K0371,MGC119606

Gene ID: 27067

NCBI Accession: [NM_014393](#)

Application Details

Application Notes: Optimal working dilution should be determined by the investigator.

Restrictions: For Research Use only

Handling

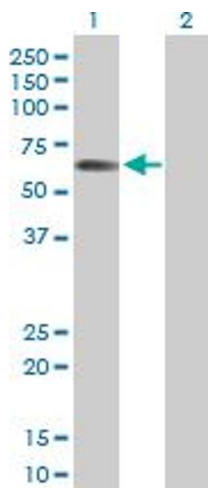
Buffer: In 1x PBS, pH 7.4

Handling Advice: Aliquot to avoid repeated freezing and thawing.

Storage: -20 °C

Storage Comment: Store at -20°C or lower. Aliquot to avoid repeated freezing and thawing.

Images

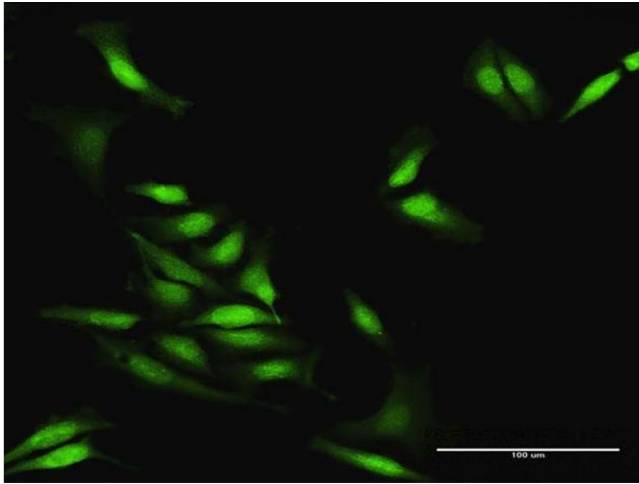


Western Blotting

Image 1. Western Blot analysis of STAU2 expression in transfected 293T cell line by STAU2 MaxPab polyclonal antibody.

Lane 1: STAU2 transfected lysate(52.80 kDa).

Lane 2: Non-transfected lysate.



Immunofluorescence

Image 2. Immunofluorescence of purified MaxPab antibody to STAU2 on HeLa cell. [antibody concentration 30 ug/ml]