



[Go to Product page](#)

Datasheet for ABIN525826
anti-LAMP3 antibody (AA 1-416)

1 Image

Overview

Quantity:	50 µg
Target:	LAMP3
Binding Specificity:	AA 1-416
Reactivity:	Human
Host:	Mouse
Clonality:	Polyclonal
Conjugate:	This LAMP3 antibody is un-conjugated
Application:	Western Blotting (WB)

Product Details

Purpose:	Mouse polyclonal antibody raised against a full-length human LAMP3 protein.
Immunogen:	LAMP3 (AAH32940.1, 1 a.a. ~ 416 a.a) full-length human protein.
Sequence:	MPRQLSAAAA LFASLAVILH DGSQMRKAF PGTRDYSQPT AAATVQDIKK PVQQPAKQAP HQTLAARFMD GHITFQTAAT VKIPTTTPAT TKNTATTSPI TYTLVTTQAT PNNSHTAPPV TEVTVGPSLA PYSLPPTITP PAHTTGTSSS TVSHTTGNTT QPSNQTTLPA TLSIALHKST TGQKPVQPTH APGTTAAAHN TTRTAAPAST VPGPTLAPQP SSVKTGIYQV LNGSRLCIKA EMGIQLIVQD KESVFSPRRY FNIDPNATQA SGNCGTRKSN LLLNFQGGFV NLFTKDEES YYISEVGAYL TVSDPETVYQ GIKHAVVMFQ TAVGHSFKCV SEQSLQLSAH LQVKTTDVQL QAFDFEDDHF GNVDECSSDY TIVLPVIGAI VVGLCLMGMG VYKIRLRCQS SGYQRI
Cross-Reactivity:	Human
Characteristics:	Antibody reactive against mammalian transfected lysate.

Target Details

Target:	LAMP3
Alternative Name:	LAMP3 (LAMP3 Products)
Background:	Full Gene Name: lysosomal-associated membrane protein 3 Synonyms: CD208,DC-LAMP,DCLAMP,LAMP,TSC403
Gene ID:	27074

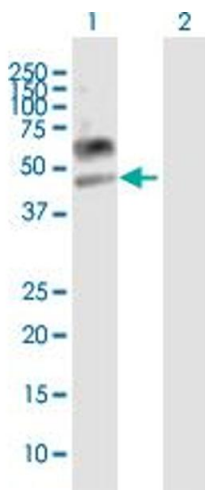
Application Details

Application Notes:	Optimal working dilution should be determined by the investigator.
Restrictions:	For Research Use only

Handling

Buffer:	In 1x PBS, pH 7.4
Handling Advice:	Aliquot to avoid repeated freezing and thawing.
Storage:	-20 °C
Storage Comment:	Store at -20°C or lower. Aliquot to avoid repeated freezing and thawing.

Images



Western Blotting

Image 1. Western Blot analysis of LAMP3 expression in transfected 293T cell line by LAMP3 MaxPab polyclonal antibody.

Lane 1: LAMP3 transfected lysate(44.30 KDa).

Lane 2: Non-transfected lysate.