

Datasheet for ABIN525844
anti-CACYBP antibody (AA 1-228)

2 Images

[Go to Product page](#)

Overview

Quantity:	100 µg
Target:	CACYBP
Binding Specificity:	AA 1-228
Reactivity:	Human
Host:	Rabbit
Clonality:	Polyclonal
Conjugate:	This CACYBP antibody is un-conjugated
Application:	Western Blotting (WB), Proximity Ligation Assay (PLA)

Product Details

Purpose:	Rabbit polyclonal antibody raised against a full-length human CACYBP protein.
Immunogen:	CACYBP (NP_055227.1, 1 a.a. ~ 228 a.a) full-length human protein.
Sequence:	MASEELQKDL EEVKVLEKA TRKRVRDALT AEKSKIETEI KNKMQQKSQK KAELLDNEKP AAVVAPITTG YTVKISNYGW DQSDKFVKIY ITLTGVHQVP TENVQVHFTE RSFDLLVKNL NGKSYSMIVN NLLKPISVEG SSKKVKTDTV LILCRKKVEN TRWDYLTQVE KECKEKEKPS YDTETDPSEG LMNVLKKIYE DGDDDMKRTI NKAWVESREK QAKGDTEF
Cross-Reactivity:	Human
Characteristics:	Antibody reactive against mammalian transfected lysate.

Target Details

Target:	CACYBP
---------	--------

Target Details

Alternative Name:	CACYBP (CACYBP Products)
Background:	Full Gene Name: calcyclin binding protein Synonyms: GIG5,MGC87971,PNAS-107,RP1-102G20.6,S100A6BP,SIP
Gene ID:	27101
NCBI Accession:	NM_014412
Pathways:	Response to Growth Hormone Stimulus

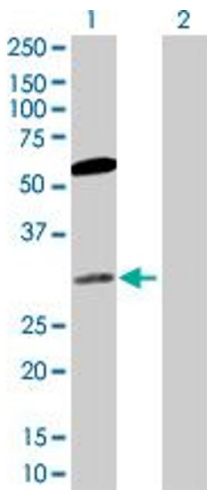
Application Details

Application Notes:	Optimal working dilution should be determined by the investigator.
Restrictions:	For Research Use only

Handling

Buffer:	In 1x PBS, pH 7.4
Handling Advice:	Aliquot to avoid repeated freezing and thawing.
Storage:	-20 °C
Storage Comment:	Store at -20°C or lower. Aliquot to avoid repeated freezing and thawing.

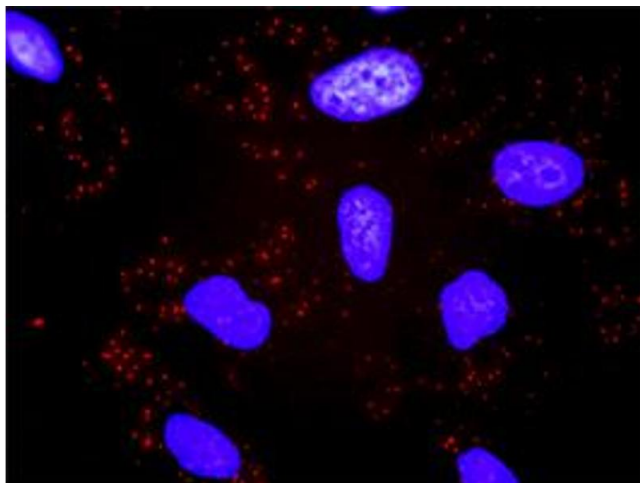
Images



Western Blotting

Image 1. Western Blot analysis of CACYBP expression in transfected 293T cell line by CACYBP MaxPab polyclonal antibody.

Lane 1: CACYBP transfected lysate(26.20 KDa).
Lane 2: Non-transfected lysate.



Proximity Ligation Assay

Image 2. Proximity Ligation Analysis of protein-protein interactions between CACYBP and TBL1X. HeLa cells were stained with anti-CACYBP rabbit purified polyclonal 1:1200 and anti-TBL1X mouse monoclonal antibody 1:50. Each red dot represents the detection of protein-protein interaction complex, and nuclei were counterstained with DAPI (blue).