



[Go to Product page](#)

Datasheet for ABIN525847
anti-SDCBP2 antibody (AA 1-292)

1 Image

Overview

| | |
|----------------------|---------------------------------------|
| Quantity: | 200 µL |
| Target: | SDCBP2 |
| Binding Specificity: | AA 1-292 |
| Reactivity: | Human |
| Host: | Mouse |
| Clonality: | Monoclonal |
| Conjugate: | This SDCBP2 antibody is un-conjugated |
| Application: | ELISA, Western Blotting (WB) |

Product Details

| | |
|-------------------|---|
| Purpose: | Mouse monoclonal antibody raised against a full-length recombinant SDCBP2. |
| Immunogen: | SDCBP2 (AAH02727, 1 a.a. ~ 292 a.a) full-length recombinant protein with GST tag. MW of the GST tag alone is 26 KDa. |
| Sequence: | MSSLYPSLED LKVDQAIQAA VRASPKMPAL PVQATAISPP PVLYPNLAEL ENYMGLSLSS QEVQESLLQI PEGDSTAVSG PGPQMVAAPV TGYSLGVRRA EIKPGVREIH LCKDERGKTG LRLRKVDQGL FVQLVQANTP ASLVGLRFGD QLLQIDGRDC AGWSSHKAHQ VVKKASGDKI VVVVRDRPFQ RTVTMHKDSM GHVGFVIKKG KIVSLVKGSS AARNGLLTNH YVCEVDGQNV IGLKDKKIME ILATAGNVVT LTIIPSVIYE HMVKKLPPVL LHHTMDHSIP DA |
| Clone: | 3E8 |
| Isotype: | IgG2b kappa |
| Cross-Reactivity: | Human |

Target Details

| | |
|-------------------|--|
| Target: | SDCBP2 |
| Alternative Name: | SDCBP2 (SDCBP2 Products) |
| Background: | Full Gene Name: syndecan binding protein (syntenin) 2 Synonyms: FLJ12256,SITAC18,ST-2 |
| Gene ID: | 27111 |

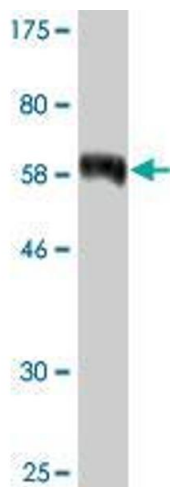
Application Details

| | |
|--------------------|---|
| Application Notes: | Optimal working dilution should be determined by the investigator. |
| Comment: | Product Quality tested by: Antibody Reactive Against Recombinant Protein. |
| Restrictions: | For Research Use only |

Handling

| | |
|------------------|--|
| Format: | Liquid |
| Buffer: | In ascites fluid |
| Handling Advice: | Aliquot to avoid repeated freezing and thawing. |
| Storage: | -20 °C |
| Storage Comment: | Store at -20°C or lower. Aliquot to avoid repeated freezing and thawing. |

Images



Western Blotting

Image 1. Western Blot detection against Immunogen (57.86 KDa) .