

Datasheet for ABIN525866  
**anti-INTU antibody (AA 1-408)**



[Go to Product page](#)

3 Images

## Overview

|                      |                                     |
|----------------------|-------------------------------------|
| Quantity:            | 50 µg                               |
| Target:              | INTU                                |
| Binding Specificity: | AA 1-408                            |
| Reactivity:          | Human                               |
| Host:                | Mouse                               |
| Clonality:           | Polyclonal                          |
| Conjugate:           | This INTU antibody is un-conjugated |
| Application:         | Western Blotting (WB)               |

## Product Details

|                   |  |
|-------------------|--|
| Purpose:          | Mouse polyclonal antibody raised against a full-length human INTU protein.   |
| Immunogen:        | INTU (ENSP00000296461, 1 a.a. ~ 408 a.a) full-length human protein.  |
| Sequence:         | MASVASCDSR PSSDELPGDP SSQEEDEDYD FEDRVSDSGS YSSASSDYDD LEPEWLDSVQ<br>KNGELFYLEL SEDEEESLLP ETPTVNHVRF SENEIIIIDD YKERKKYEPK LKQFTKILRR<br>KRLLPKRCNK KNSNDNGPVS ILKHQSNQKT GVIVQQRKYD VNVVYVNPCKL TVIKAKEQLK<br>LLEVLVGIH QTKWSWRRTG KQGDGERLVV HGLLPGGSAM KSGQVLIGDV LVAVNDVDVT<br>TENIERVLSC IPGPMQVKLT FENAYDVKRE TSHPRQKKTQ SNTSDLVKLL WGEEVEGIQQ<br>SGLNTPHIIM YLTLQLDSET SKEEQEILYH YPMSEASQKL KSVRGIFLTL CDMLNVTGT<br>QVTSSLLLLN GKQIHVAYWK ESDKLLLIIGL PAEEIELPSS AHTHGERN |
| Cross-Reactivity: | Human  |
| Characteristics:  | Antibody reactive against mammalian transfected lysate.  |

## Target Details

|                   |   |
|-------------------|---|
| Target:           | INTU  |
| Alternative Name: | INTU ( <a href="#">INTU Products</a> )  |
| Background:       | Full Gene Name: intuned planar cell polarity effector homolog (Drosophila)<br>Synonyms: FLJ41326,INT,KIAA1284,PDZD6,PDZK6 |
| Gene ID:          | 27152   |

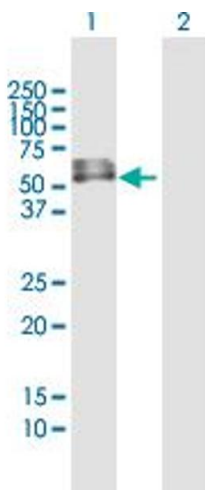
## Application Details

|                    |  |
|--------------------|--|
| Application Notes: | Optimal working dilution should be determined by the investigator. |
| Restrictions:      | For Research Use only  |

## Handling

|                  |  |
|------------------|--|
| Buffer:          | In 1x PBS, pH 7.4  |
| Handling Advice: | Aliquot to avoid repeated freezing and thawing.                          |
| Storage:         | -20 °C   |
| Storage Comment: | Store at -20°C or lower. Aliquot to avoid repeated freezing and thawing. |

## Images

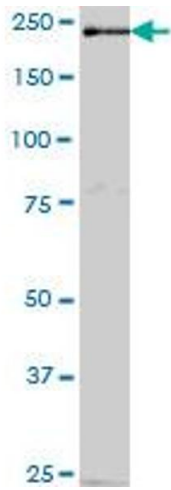


### Western Blotting

**Image 1.** Western Blot analysis of INTU expression in transfected 293T cell line by INTU MaxPab polyclonal antibody.

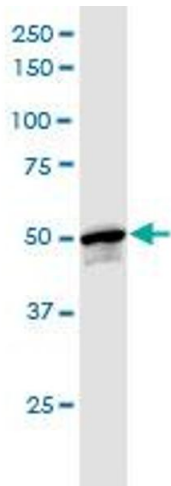
Lane 1: PDZD6 transfected lysate(44.88 KDa).

Lane 2: Non-transfected lysate.



#### Western Blotting

**Image 2.** PDZD6 MaxPab polyclonal antibody. Western Blot analysis of PDZD6 expression in human spleen.



#### Western Blotting

**Image 3.** INTU MaxPab polyclonal antibody. Western Blot analysis of INTU expression in human placenta.