

Datasheet for ABIN525874  
**anti-NDOR1 antibody (AA 1-597)**



[Go to Product page](#)

1 Image

Overview

Quantity:	100 µg
Target:	NDOR1
Binding Specificity:	AA 1-597
Reactivity:	Human
Host:	Rabbit
Clonality:	Polyclonal
Conjugate:	This NDOR1 antibody is un-conjugated
Application:	Western Blotting (WB)

Product Details

Purpose:	Rabbit polyclonal antibody raised against a full-length human NDOR1 protein.
Immunogen:	NDOR1 (AAH15735.1, 1 a.a. ~ 597 a.a) full-length human protein.
Sequence:	MPSPQLLVLF GSQTGTAQDV SERLGREARR RRLGCRVQAL DSYPPVNLIN EPLVIFVCAT TGQGDPPDNM KNFWRFIFRK NLPSTALCQM DFAVLGLGDS SYAKNFVAK KLHRRLLQLG GSALLPVCLG DDQHELGPDA AVDPWLRDLW DRVLGLYPPP PGLTEIPPGV PLPSKFTLLF LQEAPSTGSE GQRVAHPGSQ EPPSESKPFL APMISNQRVT GPSHFQDVRL IEFDILGSGI SFAAGDVVLI QPSNSAAHVQ RFCQVLGLDP DQLFMLQPRE PDVSSPTRLP QPCSMRHLVS HYLDIASVPR RSFFELLAACL SLHELEREKL LEFSSAQGQE ELFEYCNRRP RTILEVLCDF PHTAAAIPPD YLLDLIPVIR PRAFSIASSL LTHPSRLQIL VAVVQFQTRL KEPRRGLCSS WLASLDPGQG PVRVPLWVRP GSLAFPETPD TPVIMVPGGT GVAPFRAAIQ ERVAQGQTGN FLFFGCRWRD QDFYWEAEWQ ELEKRDCLTL IPAFSRESEQ KIVVQHRLRE LGSLVWELLD RQGAYFYLAG NAKSMPADVS EALMSIFQEE GGLCSPDAAA YLARLQQTRR FQTETWA

## Product Details

Cross-Reactivity:	Human
Characteristics:	Antibody reactive against mammalian transfected lysate.

## Target Details

Target:	NDOR1
Alternative Name:	NDOR1 ( <a href="#">NDOR1 Products</a> )
Background:	Full Gene Name: NADPH dependent diflavin oxidoreductase 1 Synonyms: MGC138148,NR1,bA350014.9
Gene ID:	27158

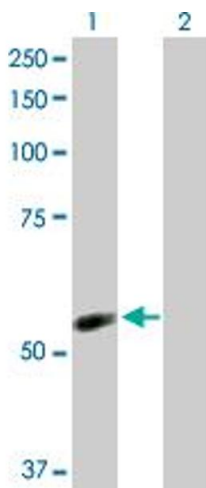
## Application Details

Application Notes:	Optimal working dilution should be determined by the investigator.
Restrictions:	For Research Use only

## Handling

Buffer:	In 1x PBS, pH 7.4
Handling Advice:	Aliquot to avoid repeated freezing and thawing.
Storage:	-20 °C
Storage Comment:	Store at -20°C or lower. Aliquot to avoid repeated freezing and thawing.

## Images



### Western Blotting

**Image 1.** Western Blot analysis of NDOR1 expression in transfected 293T cell line by NDOR1 MaxPab polyclonal antibody.

Lane 1: NDOR1 transfected lysate(66.80 KDa).

Lane 2: Non-transfected lysate.