



[Go to Product page](#)

Datasheet for ABIN525886  
**anti-FIL1h antibody (AA 1-157)**

1 Image

### Overview

Quantity:	50 µg
Target:	FIL1h
Binding Specificity:	AA 1-157
Reactivity:	Human
Host:	Mouse
Clonality:	Polyclonal
Conjugate:	This FIL1h antibody is un-conjugated
Application:	Western Blotting (WB)

### Product Details

Purpose:	Mouse polyclonal antibody raised against a full-length human IL1F8 protein.
Immunogen:	IL1F8 (NP_775270.1, 1 a.a. ~ 157 a.a) full-length human protein.
Sequence:	MNPQREAAPK SYAIRDSRQM VVWVLSGNSLI AAPLSRSIKP VTLHLIACRD TEFSDKEKGN MVYLGIGKGD LCLFCAEIQG KPTLQLKEKN IMDLYVEKKA QKPFLFFHNK EGSTSVFQSV SYPGWFIATS TTSGQPIFLT KERGITNNTN FYLDSVE
Cross-Reactivity:	Human
Characteristics:	Antibody reactive against mammalian transfected lysate.

### Target Details

Target:	FIL1h
---------	-------

## Target Details

Alternative Name:	IL1F8 ( <a href="#">FIL1h Products</a> )
Background:	Full Gene Name: interleukin 1 family, member 8 (eta) Synonyms: FIL1,FIL1-(ETA),FIL1H,IL-1F8,IL-1H2,IL1-ETA,IL1H2,MGC126880,MGC126882
Gene ID:	27177
NCBI Accession:	<a href="#">NM_173178</a>

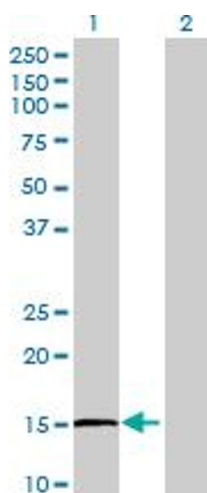
## Application Details

Application Notes:	Optimal working dilution should be determined by the investigator.
Restrictions:	For Research Use only

## Handling

Buffer:	In 1x PBS, pH 7.4
Handling Advice:	Aliquot to avoid repeated freezing and thawing.
Storage:	-20 °C
Storage Comment:	Store at -20°C or lower. Aliquot to avoid repeated freezing and thawing.

## Images



### Western Blotting

**Image 1.** Western Blot analysis of IL1F8 expression in transfected 293T cell line by IL1F8 MaxPab polyclonal antibody.

Lane1:IL1F8 transfected lysate(17.27 KDa).

Lane2:Non-transfected lysate.