



Datasheet for ABIN525900
anti-ITGB1BP3 antibody (AA 1-230)



[Go to Product page](#)

1 Image

Overview

Quantity:	50 µg
Target:	ITGB1BP3
Binding Specificity:	AA 1-230
Reactivity:	Human
Host:	Mouse
Clonality:	Polyclonal
Conjugate:	This ITGB1BP3 antibody is un-conjugated
Application:	Western Blotting (WB)

Product Details

Purpose:	Mouse polyclonal antibody raised against a full-length human ITGB1BP3 protein.
Immunogen:	ITGB1BP3 (NP_733778.1, 1 a.a. ~ 230 a.a) full-length human protein.
Sequence:	MKLVIGIGGM TNGGKTLTN SLLRALPNCC VIHQDDFFKP QDQIAVGEDG FKQWDVLESL DMEAMLDTVQ AWLSSPQKFA RAHGVSQPE ASDTHILLLE GFLLYSYKPL VDLYSRRYFL TVPYEECKWR RSTRNYTVPD PPGLFDGHVW PMYQKYRQEM EANGVEVVYL DGMKSREELF REVLEDIQNS LLNRSQESAP SPARPARTQG PGRGCGHRTA RPAASQQDSM
Cross-Reactivity:	Human
Characteristics:	Antibody reactive against mammalian transfected lysate.

Target Details

Target:	ITGB1BP3
---------	----------

Target Details

Alternative Name:	ITGB1BP3 (ITGB1BP3 Products)
Background:	Full Gene Name: integrin beta 1 binding protein 3 Synonyms: MGC126624,MIBP,NRK2
Gene ID:	27231
NCBI Accession:	NM_170678
Pathways:	Regulation of Muscle Cell Differentiation, Skeletal Muscle Fiber Development

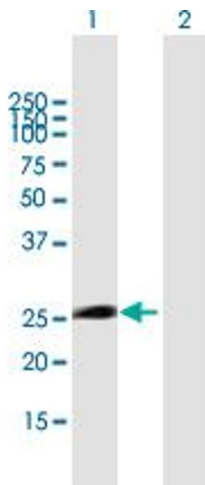
Application Details

Application Notes:	Optimal working dilution should be determined by the investigator.
Restrictions:	For Research Use only

Handling

Buffer:	In 1x PBS, pH 7.4
Handling Advice:	Aliquot to avoid repeated freezing and thawing.
Storage:	-20 °C
Storage Comment:	Store at -20°C or lower. Aliquot to avoid repeated freezing and thawing.

Images



Western Blotting

Image 1. Western Blot analysis of ITGB1BP3 expression in transfected 293T cell line by ITGB1BP3 MaxPab polyclonal antibody.

Lane1:ITGB1BP3 transfected lysate(25.3 KDa).

Lane2:Non-transfected lysate.