

Datasheet for ABIN525920
anti-SESN1 antibody (AA 1-551)



[Go to Product page](#)

3 Images

1 Publication

Overview

Quantity:	50 µg
Target:	SESN1
Binding Specificity:	AA 1-551
Reactivity:	Human
Host:	Mouse
Clonality:	Polyclonal
Conjugate:	This SESN1 antibody is un-conjugated
Application:	Western Blotting (WB), Immunofluorescence (IF)

Product Details

Purpose:	Mouse polyclonal antibody raised against a full-length human SESN1 protein.
Immunogen:	SESN1 (NP_055269.1, 1 a.a. ~ 551 a.a) full-length human protein.
Sequence:	MAEGENEVRW DGLCSRSTT RETALENIRQ TILRKTEYLR SVKETPHRPS DGLSNTESSD GLNKLLAHL MLKRCPPFKD VREKSEFILK SIQELGIRIP RPLGQGPSRF IPEKEILQVG SEDAQMHALF ADSFAALGRL DNITLVMVFH PQYLESFLKT QHYLLQMDGP LPLHYRHYIG IMAAARHQCS YLVNLHVNDF LHVGGDPKWL NGLENAPQKL QNLGELNKVL AHRPWLITKE HIEGLLKAAE HSWSLAELVH AVVLLTHYHS LASFTFGCGI SPEIHCDGGH TFRPPSVSNY CICDITNGNH SVDEMPVNSA ENVSVSDSFF EVEALMEKMR QLQECRDEEE ASQEEMASRF EIEKRESMFV FSSDDEEVTP ARAVSRHFED TSYGYKDFSR HGMHVPTFRV QDYCWEDHGY SLVNRLYPDV GQLIDEKFHI AYNLTYNTMA MHKDVDTSML RRAIWNYIHC MFGIRYDDYD YGEINQLLDR SFKVYIKTVV CTPEKVTKRM YDSFWRQFKH SEKVHVNLLL IEARMQAELL YALRAITRYM T

Product Details

Cross-Reactivity:	Human
Characteristics:	Antibody reactive against mammalian transfected lysate.

Target Details

Target:	SESN1
Alternative Name:	SESN1 (SESN1 Products)
Background:	Full Gene Name: sestrin 1 Synonyms: MGC138241,MGC142129,PA26,RP11-787I22.1,SEST1
Gene ID:	27244
NCBI Accession:	NM_014454

Application Details

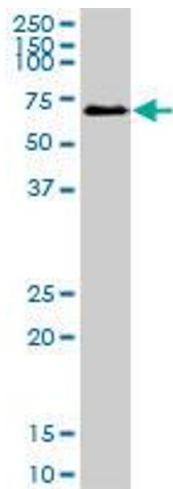
Application Notes:	Optimal working dilution should be determined by the investigator.
Restrictions:	For Research Use only

Handling

Buffer:	In 1x PBS, pH 7.4
Handling Advice:	Aliquot to avoid repeated freezing and thawing.
Storage:	-20 °C
Storage Comment:	Store at -20°C or lower. Aliquot to avoid repeated freezing and thawing.

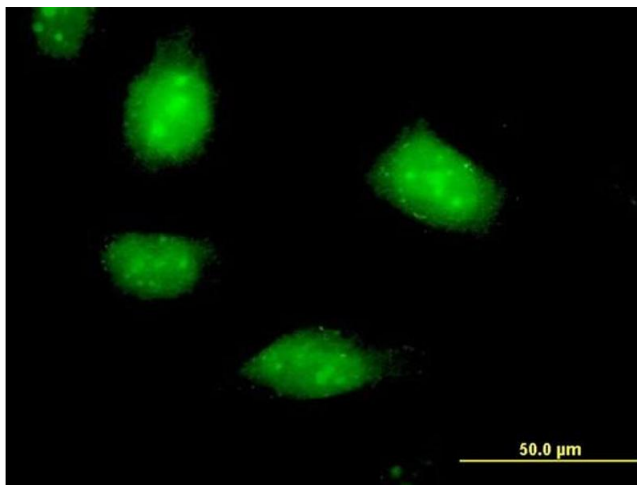
Publications

Product cited in:	Renna, Bento, Fleming, Menzies, Siddiqi, Ravikumar, Puri, Garcia-Arencibia, Sadiq, Corrochano, Carter, Brown, Acevedo-Arozena, Rubinsztein: "IGF-1 receptor antagonism inhibits autophagy." in: Human molecular genetics , Vol. 22, Issue 22, pp. 4528-44, (2013) (PubMed).
-------------------	--



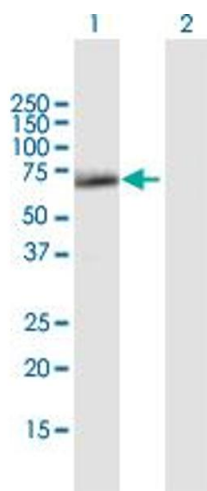
Western Blotting

Image 1. SESN1 MaxPab polyclonal antibody. Western Blot analysis of SESN1 expression in K-562.



Immunofluorescence

Image 2. Immunofluorescence of purified MaxPab antibody to SESN1 on HeLa cell. [antibody concentration 10 ug/ml]



Western Blotting

Image 3. Western Blot analysis of SESN1 expression in transfected 293T cell line by SESN1 MaxPab polyclonal antibody.

Lane 1: SESN1 transfected lysate(60.61 KDa).

Lane 2: Non-transfected lysate.