



[Go to Product page](#)

Datasheet for ABIN525940
anti-RND1 antibody (AA 1-232)

1 Image

Overview

| | |
|----------------------|-------------------------------------|
| Quantity: | 50 µg |
| Target: | RND1 |
| Binding Specificity: | AA 1-232 |
| Reactivity: | Human |
| Host: | Mouse |
| Clonality: | Polyclonal |
| Conjugate: | This RND1 antibody is un-conjugated |
| Application: | Western Blotting (WB) |

Product Details

| | |
|-------------------|--|
| Purpose: | Mouse polyclonal antibody raised against a full-length human RND1 protein. |
| Immunogen: | RND1 (NP_055285, 1 a.a. ~ 232 a.a) full-length human protein. |
| Sequence: | MKERRAPQPV VARCKLVLVG DVQCGKTAML QVLAKDCYPE TYVPTVFENY TACLETEEQR VELSLWDTSG SPYYDNVRPL CYSDDAVLL CFDISRPETV DSALKKWRTE ILDYCPSTRV LLIGCKTDLR TDLSTLMELS HQKQAPISYE QGCAIAKQLG AEIYLEGSAF TSEKSIHSIF RTASMLCLNK PSPLPQKSPV RLSKRLLHL PSRSELISST FKKEKAKSCS IM |
| Cross-Reactivity: | Human |
| Characteristics: | Antibody reactive against mammalian transfected lysate. |

Target Details

| | |
|---------|------|
| Target: | RND1 |
|---------|------|

Target Details

| | |
|-------------------|--|
| Alternative Name: | RND1 (RND1 Products) |
| Background: | Full Gene Name: Rho family GTPase 1 Synonyms: ARHS,FLJ42294,RHO6,RHOS |
| Gene ID: | 27289 |
| NCBI Accession: | NM_014470 |

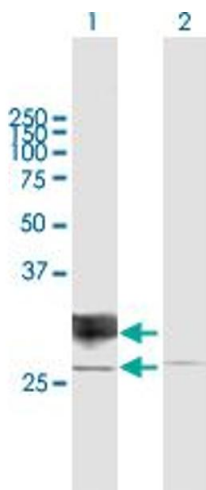
Application Details

| | |
|--------------------|--|
| Application Notes: | Optimal working dilution should be determined by the investigator. |
| Restrictions: | For Research Use only |

Handling

| | |
|------------------|--|
| Buffer: | In 1x PBS, pH 7.4 |
| Handling Advice: | Aliquot to avoid repeated freezing and thawing. |
| Storage: | -20 °C |
| Storage Comment: | Store at -20°C or lower. Aliquot to avoid repeated freezing and thawing. |

Images



Western Blotting

Image 1. Western Blot analysis of RND1 expression in transfected 293T cell line by RND1 MaxPab polyclonal antibody.

Lane1:RND1 transfected lysate(25.52 KDa).

Lane2:Non-transfected lysate.