



[Go to Product page](#)

Datasheet for ABIN525961  
**anti-PTGDS antibody (AA 1-199)**

1 Image

Overview

Quantity:	100 µg
Target:	PTGDS
Binding Specificity:	AA 1-199
Reactivity:	Human
Host:	Rabbit
Clonality:	Polyclonal
Conjugate:	This PTGDS antibody is un-conjugated
Application:	Western Blotting (WB)

Product Details

Purpose:	Rabbit polyclonal antibody raised against a full-length human PGDS protein.
Immunogen:	PGDS (NP_055300.1, 1 a.a. ~ 199 a.a) full-length human protein.
Sequence:	MPNYKLTYFN MRGRAEIIRY IFAYLDIQYE DHRIEQADWP EIKSTLPFGK IPILEVDGLT LHQSLAIARY LTKNTDLAGN TEMEQCHVDA IVDTLDDFMS CFPWAEKKQD VKEQMFNELL TYNAPHLMQD LDTYLGGREW LIGNSVTWAD FYWEICSTTL LVFKPDLLDN HPRLVTLRKK VQAIPAVANW IKRRPQTKL
Cross-Reactivity:	Human
Characteristics:	Antibody reactive against mammalian transfected lysate.

Target Details

Target:	PTGDS
---------	-------

## Target Details

Alternative Name:	PGDS ( <a href="#">PTGDS Products</a> )
Background:	Full Gene Name: prostaglandin D2 synthase, hematopoietic Synonyms:
Gene ID:	27306
NCBI Accession:	<a href="#">NM_014485</a>

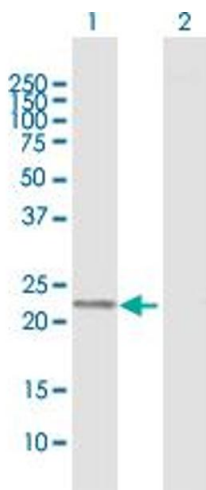
## Application Details

Application Notes:	Optimal working dilution should be determined by the investigator.
Restrictions:	For Research Use only

## Handling

Buffer:	In 1x PBS, pH 7.4
Handling Advice:	Aliquot to avoid repeated freezing and thawing.
Storage:	-20 °C
Storage Comment:	Store at -20°C or lower. Aliquot to avoid repeated freezing and thawing.

## Images



### Western Blotting

**Image 1.** Western Blot analysis of PGDS expression in transfected 293T cell line by PGDS MaxPab polyclonal antibody.

Lane 1: PGDS transfected lysate(23.30 KDa).

Lane 2: Non-transfected lysate.