



[Go to Product page](#)

Datasheet for ABIN525969

anti-RPS6KA6 antibody (AA 636-745)

2 Images

Overview

Quantity:	200 µL
Target:	RPS6KA6
Binding Specificity:	AA 636-745
Reactivity:	Human
Host:	Mouse
Clonality:	Monoclonal
Conjugate:	This RPS6KA6 antibody is un-conjugated
Application:	ELISA, Western Blotting (WB)

Product Details

Purpose:	Mouse monoclonal antibody raised against a partial recombinant RPS6KA6.
Immunogen:	RPS6KA6 (NP_055311.1, 636 a.a. ~ 745 a.a) partial recombinant protein with GST tag. MW of the GST tag alone is 26 KDa.
Sequence:	RINGNGKFSLSGGNWDNISDGAKDLLSHMLHMDPHQRYTAEQILKHSWITHRDQLPNDQPK RNDVSHVVKGMVATYSALTKHTFQPVLEPVAASSLAQRRSMKKRTSTGL
Clone:	3E2
Isotype:	IgG3 kappa
Cross-Reactivity:	Human, Rat

Target Details

Target:	RPS6KA6
Alternative Name:	RPS6KA6 (RPS6KA6 Products)
Background:	Full Gene Name: ribosomal protein S6 kinase, 90 kDa, polypeptide 6 Synonyms: RSK4
Gene ID:	27330
NCBI Accession:	NP_055311 , NM_014496
Pathways:	MAPK Signaling

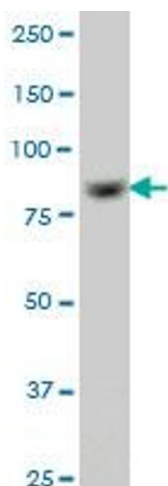
Application Details

Application Notes:	Optimal working dilution should be determined by the investigator.
Comment:	Product Quality tested by: Antibody Reactive Against Recombinant Protein.
Restrictions:	For Research Use only

Handling

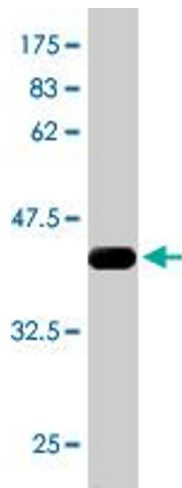
Format:	Liquid
Buffer:	In ascites fluid
Handling Advice:	Aliquot to avoid repeated freezing and thawing.
Storage:	-20 °C
Storage Comment:	Store at -20°C or lower. Aliquot to avoid repeated freezing and thawing.

Images



Western Blotting

Image 1. RPS6KA6 monoclonal antibody (M05A), clone 3E2.
Western Blot analysis of RPS6KA6 expression in PC-12.



Western Blotting

Image 2. Western Blot detection against Immunogen (37.84 KDa).