



[Go to Product page](#)

Datasheet for ABIN525973  
**anti-UBE2S antibody (AA 1-222)**

1 Image

### Overview

Quantity:	100 µL
Target:	UBE2S
Binding Specificity:	AA 1-222
Reactivity:	Human
Host:	Rabbit
Clonality:	Polyclonal
Conjugate:	This UBE2S antibody is un-conjugated
Application:	Immunoprecipitation (IP)

### Product Details

Purpose:	Rabbit polyclonal antibody raised against a full-length human UBE2S protein.
Immunogen:	UBE2S (NP_055316.2, 1 a.a. ~ 222 a.a) full-length human protein.
Sequence:	MNSNVENLPP HIIRLVYKEV TTLTADPPDG IKVFPNEEDL TDLQVTIEGP EGTPYAGGLF RMKLLLKGDF PASPPKGYFL TKIFHPNVGA NGEICVNVLK RDWTAELGIR HVLLTIKCLL IHPNPESALN EEAGRLLLEN YEEYAARARL LTEIHGGAGG PSGRAEAGRA LASGTEASST DPGAPGGPGG AEGPMAKKHA GERDCKLAAK KKTDDKRALR RL
Cross-Reactivity:	Human
Characteristics:	Antibody reactive against mammalian transfected lysate.

### Target Details

Target:	UBE2S
---------	-------

## Target Details

Alternative Name:	UBE2S ( <a href="#">UBE2S Products</a> )
Background:	Full Gene Name: ubiquitin-conjugating enzyme E2S Synonyms: E2-EPF,E2EPF,EPF5
Gene ID:	27338
NCBI Accession:	<a href="#">NM_014501</a>
Pathways:	<a href="#">Ubiquitin Proteasome Pathway</a>

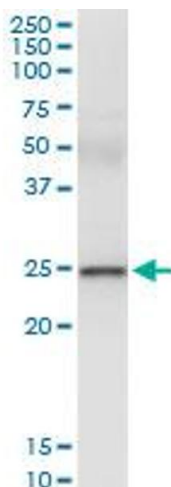
## Application Details

Application Notes:	Optimal working dilution should be determined by the investigator.
Restrictions:	For Research Use only

## Handling

Format:	Liquid
Buffer:	No additive
Preservative:	Without preservative
Handling Advice:	Aliquot to avoid repeated freezing and thawing.
Storage:	-20 °C
Storage Comment:	Store at -20°C or lower. Aliquot to avoid repeated freezing and thawing.

## Images



### Immunoprecipitation

**Image 1.** Immunoprecipitation of UBE2S transfected lysate using anti-UBE2S MaxPab rabbit polyclonal antibody and Protein A Magnetic Bead , and immunoblotted with UBE2S purified MaxPab mouse polyclonal antibody (B01P) .