



Datasheet for ABIN525977  
**anti-RABGEF1 antibody (AA 1-491)**



[Go to Product page](#)

2 Images

Overview

Quantity:	50 µg
Target:	RABGEF1
Binding Specificity:	AA 1-491
Reactivity:	Human
Host:	Mouse
Clonality:	Polyclonal
Conjugate:	This RABGEF1 antibody is un-conjugated
Application:	Western Blotting (WB)

Product Details

Purpose:	Mouse polyclonal antibody raised against a full-length human RABGEF1 protein.
Immunogen:	RABGEF1 (NP_055319.1, 1 a.a. ~ 491 a.a) full-length human protein.
Sequence:	MSLKSERRGI HVDQSDLLCK KGCYYGNPA WQGFCSKCWR EYHKARQKQ IQEDWELAER LQREEEFAFA SSQSSQGAQS LTFSKFEEKK TNEKTRKVTT VKKFFSASSR VGSKKEIQEA KAPSPSINRQ TSJETDRVSK EFIEFLKTFH KTGQEIYKQT KLFLEGMHYK RDLSEIEQSE CAQDFYHNVA ERMQTRGKVP PERVEKIMDQ IEKYIMTRLY KYVFCPETTD DEKKDLAIQK RIRALRWVTP QMLCVPVNE IPEVSDMVVK AITDIIEMDS KRVPDKLAC ITCCKSHIFN AIKITKNEPA SADDLPTLI YIVLKGNNPPR LQSNIQYITR FCNPSRLMTG EDGYYFTNLC CAVAFIEKLD AQLNLSQED FDRYMSGQTS PRKQEAESWS PDACLGVKQM YKNLDLLSQL NERQERIMNE AKKLEKDLID WTDGIAREVQ DIVEKYPLEI KPPNQPLAAI DSENVENDKL PPPLQPQVYA G

## Product Details

---

Cross-Reactivity:	Human
Characteristics:	Antibody reactive against mammalian transfected lysate.

## Target Details

---

Target:	RABGEF1
Alternative Name:	RABGEF1 ( <a href="#">RABGEF1 Products</a> )
Background:	Full Gene Name: RAB guanine nucleotide exchange factor (GEF) 1 Synonyms: FLJ32302,RABEX5,rabex-5
Gene ID:	27342
NCBI Accession:	<a href="#">NM_014504</a>
Pathways:	<a href="#">Regulation of Leukocyte Mediated Immunity</a> , <a href="#">Positive Regulation of Immune Effector Process</a>

## Application Details

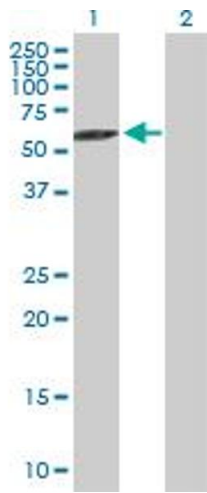
---

Application Notes:	Optimal working dilution should be determined by the investigator.
Restrictions:	For Research Use only

## Handling

---

Buffer:	In 1x PBS, pH 7.4
Handling Advice:	Aliquot to avoid repeated freezing and thawing.
Storage:	-20 °C
Storage Comment:	Store at -20°C or lower. Aliquot to avoid repeated freezing and thawing.

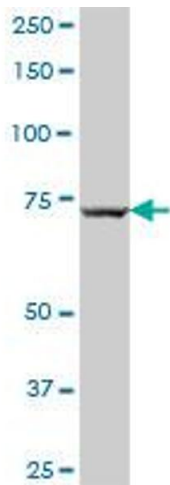


#### Western Blotting

**Image 1.** Western Blot analysis of RABGEF1 expression in transfected 293T cell line by RABGEF1 MaxPab polyclonal antibody.

Lane 1: RABGEF1 transfected lysate(54.01 KDa).

Lane 2: Non-transfected lysate.



#### Western Blotting

**Image 2.** RABGEF1 MaxPab polyclonal antibody. Western Blot analysis of RABGEF1 expression in human liver.