

Datasheet for ABIN525993
anti-PPP2R3B antibody (AA 1-225)[Go to Product page](#)

1 Image

Overview

Quantity:	50 µL
Target:	PPP2R3B
Binding Specificity:	AA 1-225
Reactivity:	Human
Host:	Mouse
Clonality:	Polyclonal
Conjugate:	This PPP2R3B antibody is un-conjugated
Application:	Western Blotting (WB)

Product Details

Purpose:	Mouse polyclonal antibody raised against a full-length human PPP2R3B protein.
Immunogen:	PPP2R3B (AAH11180.1, 1 a.a. ~ 225 a.a) full-length human protein.
Sequence:	MIDRIFSGAV TRGRKVQKEG KISYADFVWF LISEEDKKTP TSIEYWFRM DLDGDGALSM FELEYFYEEQ CRRLDSMAIE ALPFQDCLCQ MLDLVKPRTE GKITLQDLKR CKLANVFFDT FFNIEKYLDH EQKEQISLLR DGDSSGPELS DWEKYAAEEY DILVAEETAG EPWEDGFEAE LSPVEQKLSA LRSPLAQRPF FEAPSPLGAV DLYEYACGDE DLEPL
Cross-Reactivity:	Human
Characteristics:	Antibody reactive against mammalian transfected lysate.

Target Details

Target:	PPP2R3B
---------	---------

Target Details

Alternative Name:	PPP2R3B (PPP2R3B Products)
Background:	Full Gene Name: protein phosphatase 2 (formerly 2A), regulatory subunit B", beta Synonyms: NY-REN-8,PPP2R3L,PPP2R3LY,PR48
Gene ID:	28227
Pathways:	PI3K-Akt Signaling , Mitotic G1-G1/S Phases

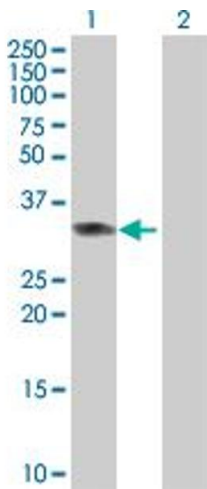
Application Details

Application Notes:	Optimal working dilution should be determined by the investigator.
Restrictions:	For Research Use only

Handling

Format:	Liquid
Buffer:	No additive
Preservative:	Without preservative
Handling Advice:	Aliquot to avoid repeated freezing and thawing.
Storage:	-20 °C
Storage Comment:	Store at -20°C or lower. Aliquot to avoid repeated freezing and thawing.

Images



Western Blotting

Image 1. Western Blot analysis of PPP2R3B expression in transfected 293T cell line by PPP2R3B MaxPab polyclonal antibody.

Lane 1: PPP2R3B transfected lysate(24.86 KDa).

Lane 2: Non-transfected lysate.