

Datasheet for ABIN526000
anti-PPP2R3B antibody (AA 1-176)

3 Images

[Go to Product page](#)

Overview

Quantity:	100 µg
Target:	PPP2R3B
Binding Specificity:	AA 1-176
Reactivity:	Human
Host:	Mouse
Clonality:	Monoclonal
Conjugate:	This PPP2R3B antibody is un-conjugated
Application:	Western Blotting (WB), ELISA, Immunoprecipitation (IP)

Product Details

Purpose:	Mouse monoclonal antibody raised against a full-length recombinant PPP2R3B.
Immunogen:	PPP2R3B (AAH09032, 1 a.a. ~ 176 a.a) full-length recombinant protein with GST tag. MW of the GST tag alone is 26 KDa.
Sequence:	MDLDGDGALS MFELEYFYEE QCRRLD SMAI EALPFQDCLC QMLDLVKPRT EGKITLQDLK RCKLANVFFD TFFNIEKYLD HEQKEQISLL RDGDSGGPEL SDWEKYAAEE YDILVAEETA GEPWEDGF EA ELSPVEQKLS ALRSPLAQR P FFEAPSPLGA VDLYEYACGD EDLES L
Clone:	1F4
Isotype:	IgG1
Cross-Reactivity:	Human
Characteristics:	Antibody Reactive Against Recombinant Protein.

Target Details

Target:	PPP2R3B
Alternative Name:	PPP2R3B (PPP2R3B Products)
Background:	Full Gene Name: protein phosphatase 2 (formerly 2A), regulatory subunit B", beta Synonyms: NY-REN-8,PPP2R3L,PPP2R3LY,PR48
Gene ID:	28227
Pathways:	PI3K-Akt Signaling , Mitotic G1-G1/S Phases

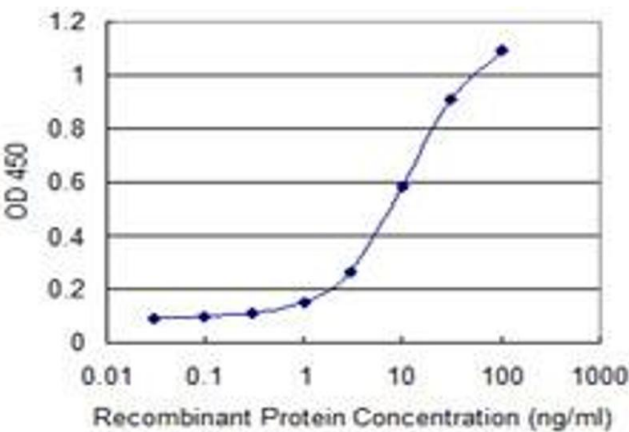
Application Details

Application Notes:	Optimal working dilution should be determined by the investigator.
Restrictions:	For Research Use only

Handling

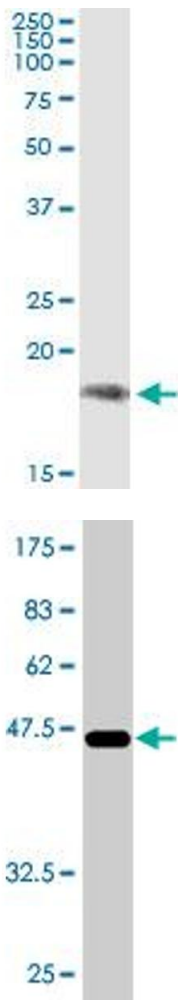
Buffer:	In 1x PBS, pH 7.4
Handling Advice:	Aliquot to avoid repeated freezing and thawing.
Storage:	-20 °C
Storage Comment:	Store at -20°C or lower. Aliquot to avoid repeated freezing and thawing.

Images



ELISA

Image 1. Detection limit for recombinant GST tagged PPP2R3B is 0.3 ng/ml as a capture antibody.



Immunoprecipitation

Image 2. Immunoprecipitation of PPP2R3B transfected lysate using anti-PPP2R3B monoclonal antibody and Protein A Magnetic Bead , and immunoblotted with PPP2R3B MaxPab rabbit polyclonal antibody.

Western Blotting

Image 3. Western Blot detection against Immunogen (45.1 KDa) .