

Datasheet for ABIN526026  
**anti-SLC6A16 antibody (AA 406-492)**[Go to Product page](#)

## 4 Images

## Overview

Quantity:	100 µg
Target:	SLC6A16
Binding Specificity:	AA 406-492
Reactivity:	Human
Host:	Mouse
Clonality:	Monoclonal
Conjugate:	This SLC6A16 antibody is un-conjugated
Application:	ELISA, Western Blotting (WB), Immunofluorescence (IF)

## Product Details

Purpose:	Mouse monoclonal antibody raised against a partial recombinant SLC6A16.
Immunogen:	SLC6A16 (NP_054756.2, 406 a.a. ~ 492 a.a) partial recombinant protein with GST tag. MW of the GST tag alone is 26 KDa.
Sequence:	RCCERNAEIL LKLINLGKLP PDAKPPVNLL YNPTSIYNAW LSGLPQHIKS MVLREVTECN IETQFLKASE GPKFAFLSFV EAMSFLP
Clone:	2E5
Isotype:	IgG1
Cross-Reactivity:	Human
Characteristics:	Antibody Reactive Against Recombinant Protein.

## Target Details

Target:	SLC6A16
Alternative Name:	SLC6A16 ( <a href="#">SLC6A16 Products</a> )
Background:	Full Gene Name: solute carrier family 6, member 16 Synonyms: NTT5
Gene ID:	28968
NCBI Accession:	<a href="#">NM_014037</a>

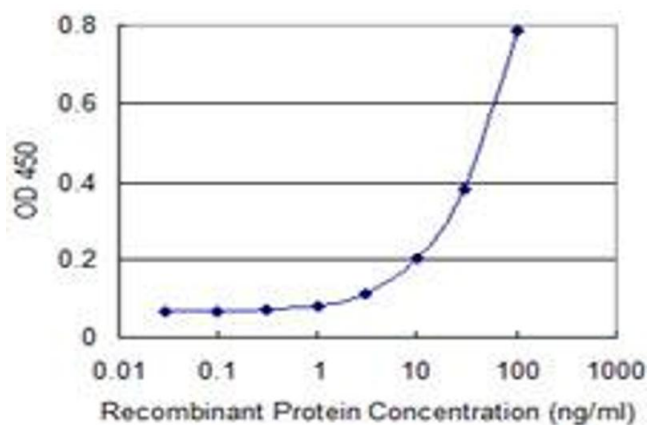
## Application Details

Application Notes:	Optimal working dilution should be determined by the investigator.
Restrictions:	For Research Use only

## Handling

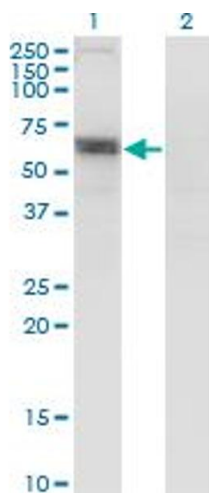
Buffer:	In 1x PBS, pH 7.4
Handling Advice:	Aliquot to avoid repeated freezing and thawing.
Storage:	-20 °C
Storage Comment:	Store at -20°C or lower. Aliquot to avoid repeated freezing and thawing.

## Images



### ELISA

**Image 1.** Detection limit for recombinant GST tagged SLC6A16 is 1 ng/ml as a capture antibody.

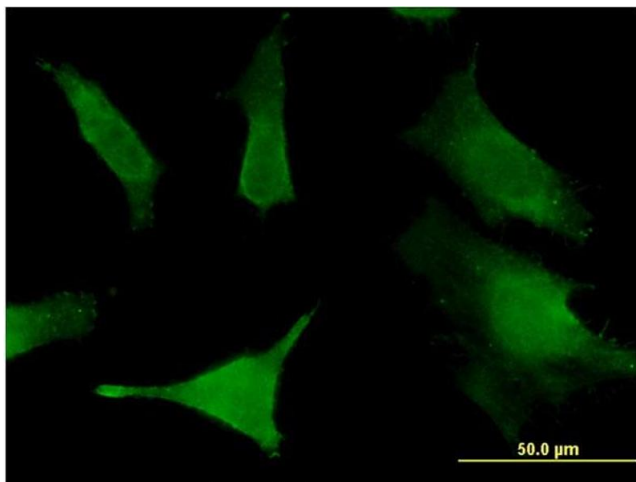


### Western Blotting

**Image 2.** Western Blot analysis of SLC6A16 expression in transfected 293T cell line by SLC6A16 monoclonal antibody (M13), clone 2E5.

Lane 1: SLC6A16 transfected lysate (Predicted MW: 73.5 kDa).

Lane 2: Non-transfected lysate.



### Immunofluorescence

**Image 3.** Immunofluorescence of monoclonal antibody to SLC6A16 on HeLa cell. [antibody concentration 10 ug/ml]

Please check the [product details page](#) for more images. Overall 4 images are available for ABIN526026.