



[Go to Product page](#)

Datasheet for ABIN526064  
**anti-CHMP4A antibody (AA 1-222)**

1 Image

Overview

Quantity:	50 µg
Target:	CHMP4A
Binding Specificity:	AA 1-222
Reactivity:	Human
Host:	Mouse
Clonality:	Polyclonal
Conjugate:	This CHMP4A antibody is un-conjugated
Application:	Western Blotting (WB)

Product Details

Purpose:	Mouse polyclonal antibody raised against a full-length human CHMP4A protein.
Immunogen:	CHMP4A (AAH10893, 1 a.a. ~ 222 a.a) full-length human protein.
Sequence:	MSG LGRLFGK GKKEKGPTPE EAIQKLKETE KILIKKQEFL EQIQQELQT AKKYGTKNKR AALQALRRKK RFEQQLAQT D GTLSTLEFQR EAIENATTNA EVLRTMELAA QSMKKAYQDM DIDKVDLMT DITEQQEVAQ QISDAISRPM GFRDDVDEDE LLEELEEQ EELAQELLNV GDKEEPSVK LPSVPSTHLP AGPAPKVDED EEALKQLAEW VS
Cross-Reactivity:	Human
Characteristics:	Antibody reactive against mammalian transfected lysate.

Target Details

Target:	CHMP4A
---------	--------

## Target Details

Alternative Name:	CHMP4A ( <a href="#">CHMP4A Products</a> )
Background:	Full Gene Name: chromatin modifying protein 4A Synonyms: C14orf123,CHMP4,CHMP4B,HSPC134,MGC142093,MGC142095,SNF7,SNF7-1,Shax2
Gene ID:	29082

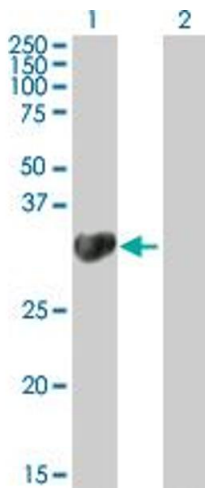
## Application Details

Application Notes:	Optimal working dilution should be determined by the investigator.
Restrictions:	For Research Use only

## Handling

Buffer:	In 1x PBS, pH 7.4
Handling Advice:	Aliquot to avoid repeated freezing and thawing.
Storage:	-20 °C
Storage Comment:	Store at -20°C or lower. Aliquot to avoid repeated freezing and thawing.

## Images



### Western Blotting

**Image 1.** Western Blot analysis of CHMP4A expression in transfected 293T cell line by CHMP4A MaxPab polyclonal antibody.

Lane 1: CHMP4A transfected lysate(24.53 kDa).

Lane 2: Non-transfected lysate.