



[Go to Product page](#)

Datasheet for ABIN526076

anti-SSU72 antibody (AA 1-194)

2 Images

Overview

Quantity:	50 µg
Target:	SSU72
Binding Specificity:	AA 1-194
Reactivity:	Human
Host:	Mouse
Clonality:	Polyclonal
Conjugate:	This SSU72 antibody is un-conjugated
Application:	Western Blotting (WB), Immunofluorescence (IF)

Product Details

Purpose:	Mouse polyclonal antibody raised against a full-length human SSU72 protein.
Immunogen:	SSU72 (NP_054907.1, 1 a.a. ~ 194 a.a) full-length human protein.
Sequence:	MPSSPLRVAV VCSSNQNRSM EAHNILSKRG FSVRSFGTGT HVKLPGPAPD KPNVYDFKTT YDQMYNDLLR KDKELYTQNG ILHMLDRNKR IKPRPERFQN CKDLFDLILT CEERVYDQVV EDLNSREQET CQPVHVVNVD IQDNHEEATL GAFLICELCQ CIQHTEDMEN EIDELLQEFE EKSGRTFLHT VCFY
Cross-Reactivity:	Human
Characteristics:	Antibody reactive against mammalian transfected lysate.

Target Details

Target:	SSU72
---------	-------

Target Details

Alternative Name:	SSU72 (SSU72 Products)
Background:	Full Gene Name: SSU72 RNA polymerase II CTD phosphatase homolog (<i>S. cerevisiae</i>) Synonyms: FLJ13048,HSPC182,PNAS-120
Gene ID:	29101
NCBI Accession:	NM_014188

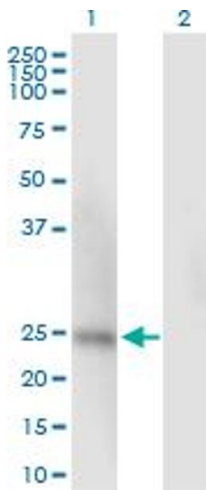
Application Details

Application Notes:	Optimal working dilution should be determined by the investigator.
Restrictions:	For Research Use only

Handling

Buffer:	In 1x PBS, pH 7.4
Handling Advice:	Aliquot to avoid repeated freezing and thawing.
Storage:	-20 °C
Storage Comment:	Store at -20°C or lower. Aliquot to avoid repeated freezing and thawing.

Images

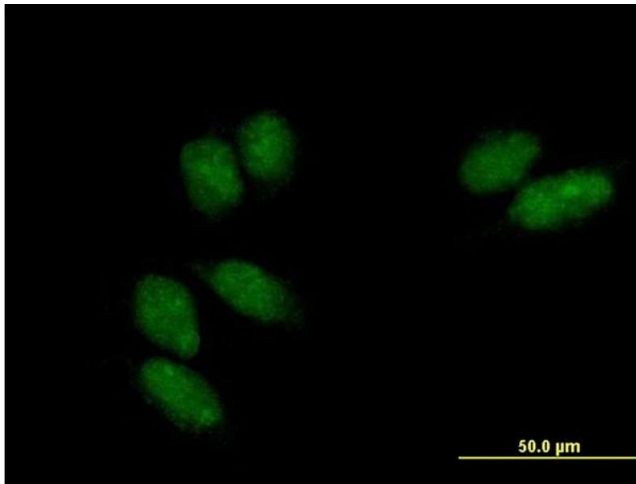


Western Blotting

Image 1. Western Blot analysis of SSU72 expression in transfected 293T cell line by SSU72 MaxPab polyclonal antibody.

Lane 1: SSU72 transfected lysate(21.34 KDa).

Lane 2: Non-transfected lysate.



Immunofluorescence

Image 2. Immunofluorescence of purified MaxPab antibody to SSU72 on HeLa cell. [antibody concentration 10 ug/ml]