



[Go to Product page](#)

Datasheet for ABIN526094

## anti-CTNNA3 antibody (AA 1-516)

### 3 Images

#### Overview

Quantity:	100 µg
Target:	CTNNA3
Binding Specificity:	AA 1-516
Reactivity:	Human
Host:	Rabbit
Clonality:	Polyclonal
Conjugate:	This CTNNA3 antibody is un-conjugated
Application:	Western Blotting (WB), Proximity Ligation Assay (PLA)

#### Product Details

Purpose:	Rabbit polyclonal antibody raised against a full-length human CTNNA3 protein.
Immunogen:	CTNNA3 (AAH65819.1, 1 a.a. ~ 516 a.a) full-length human protein.
Sequence:	MSAETPITLN IDPQDLQVQT FTVEKLLLEPL IIQVTTLVNC PQNPSSRKKG RSKRASVLLA SVEEATWNLL DKGEKIAQEA TVLKDELTAS LEEVRKESEA LKVSAERFTD DPCFLPKREA VVQAARALLA AVTRLLILAD MIDVMCLLQH VSAFQRTFES LKNVANKSDL QKTYQKLGKE LENLDYLAFK RQQDLKSPNQ RDEIAGARAS LKENSPLLHS ICSACLEHSD VASLKASKDT VCEEIQNALN VISNASGGIQ NMTTPPEPQA ATLGSADEL ENLIVLNPLT VTEEEIRPSL EKRLEAIIISG AALLADSSCT RDLHRERIIA ECNAIRQALQ DLLSEYMNNA GKKERSNTLN IALDNMCKKT RDLRRQLRKA IIDHVSDSFL DTTVPLLVI EAAKNGREKE IKEYAAIFHE HTSRLVEVAN LACSMSTNED GIKIVKIAAN HLETLCQPQII NAALALAARP KSQAVKNTME MYKRTWENHI HVLTEAVDDI TSIDDFLAVS GMFLFF

## Product Details

Cross-Reactivity:	Human, Mouse
Characteristics:	Antibody reactive against mammalian transfected lysate.

## Target Details

Target:	CTNNA3
Alternative Name:	CTNNA3 ( <a href="#">CTNNA3 Products</a> )
Background:	Full Gene Name: catenin (cadherin-associated protein), alpha 3 Synonyms: MGC26194,MGC75041,VR22
Gene ID:	29119

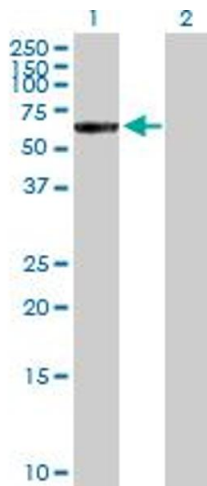
## Application Details

Application Notes:	Optimal working dilution should be determined by the investigator.
Restrictions:	For Research Use only

## Handling

Buffer:	In 1x PBS, pH 7.4
Handling Advice:	Aliquot to avoid repeated freezing and thawing.
Storage:	-20 °C
Storage Comment:	Store at -20°C or lower. Aliquot to avoid repeated freezing and thawing.

## Images

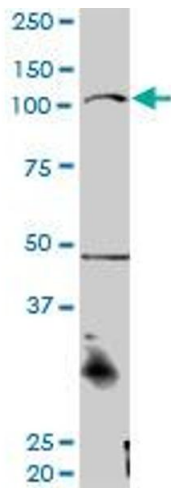


### Western Blotting

**Image 1.** Western Blot analysis of CTNNA3 expression in transfected 293T cell line by CTNNA3 MaxPab polyclonal antibody.

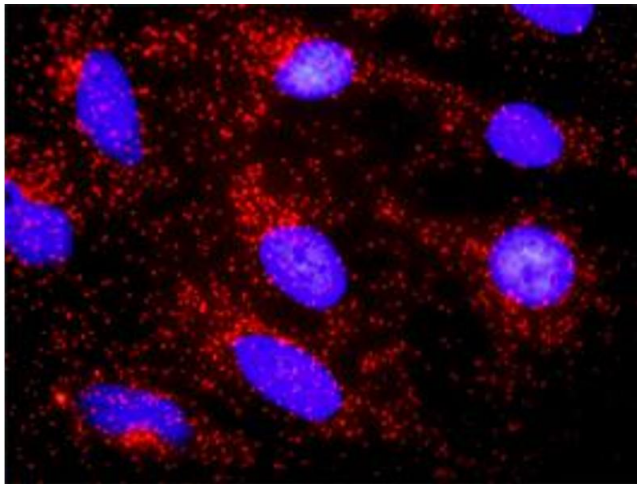
Lane 1: CTNNA3 transfected lysate(57.30 KDa).

Lane 2: Non-transfected lysate.



### Western Blotting

**Image 2.** CTNNA3 MaxPab rabbit polyclonal antibody. Western Blot analysis of CTNNA3 expression in mouse spleen.



### Proximity Ligation Assay

**Image 3.** Proximity Ligation Analysis of protein-protein interactions between CTNNA3 and CTNNB1. HeLa cells were stained with anti-CTNNA3 rabbit purified polyclonal 1:1200 and anti-CTNNB1 mouse monoclonal antibody 1:50. Each red dot represents the detection of protein-protein interaction complex, and nuclei were counterstained with DAPI (blue).