

Datasheet for ABIN526190
anti-Ceramide Synthase 2 antibody (AA 1-380)



[Go to Product page](#)

1 Image

2 Publications

Overview

Quantity:	200 µL
Target:	Ceramide Synthase 2 (CERS2)
Binding Specificity:	AA 1-380
Reactivity:	Human
Host:	Mouse
Clonality:	Monoclonal
Conjugate:	This Ceramide Synthase 2 antibody is un-conjugated
Application:	Western Blotting (WB), ELISA

Product Details

Purpose:	Mouse monoclonal antibody raised against a full-length recombinant LASS2.
Immunogen:	LASS2 (AAH01357, 1 a.a. ~ 380 a.a) full-length recombinant protein with GST tag. MW of the GST tag alone is 26 KDa.
Sequence:	MLQTLYDYFW WERLWLPVNL TWADLEDRDG RVYAKASDLY ITLPLALLFL IVRYFFELYV ATPLAALLNI KEKTRLRAPP NATLEHFYLT SGKQPKQVEV ELLSRQSGLS GRQVERWFRR RRNQDRPSLL KKFREASWRF TFYLIAFIAG MAVIVDKPWF YDMKKVWEGY PIQSTIPSQY WYMIELSFY WLLFSIASD VKRKDFKEQI IHHVATIILI SFSWFANYIR AGTLIMALHD SSDYLLES AK MFNYAGWKNT CNNIFIVFAI VFIITRLVIL PFWILHCTLV YPLELYPAFF GYFFNSMMG VLQLLHIFWA YLILRMAHKF ITGKLVEDER SDREETESSE GEEAAAGGGA KSRPLANGHP ILNNNHRKND
Clone:	1A6

Product Details

Isotype: IgM kappa

Cross-Reactivity: Human

Target Details

Target: Ceramide Synthase 2 (CERS2)

Alternative Name: LASS2 ([CERS2 Products](#))

Background: Full Gene Name: LAG1 homolog, ceramide synthase 2
Synonyms: CerS2,FLJ10243,L3,MGC987,SP260,TMSG1

Gene ID: 29956

Application Details

Application Notes: Optimal working dilution should be determined by the investigator.

Comment: Product Quality tested by: Antibody Reactive Against Recombinant Protein.

Restrictions: For Research Use only

Handling

Format: Liquid

Buffer: In ascites fluid

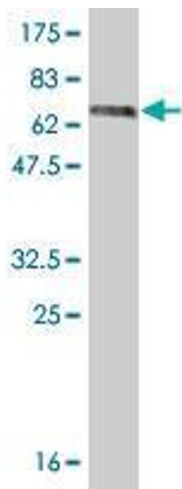
Handling Advice: Aliquot to avoid repeated freezing and thawing.

Storage: -20 °C

Storage Comment: Store at -20°C or lower. Aliquot to avoid repeated freezing and thawing.

Publications

Product cited in: Lin, Chen, Chen, Liou, Chen, Yang, Shiue: "Identification of early transcripts related to male development in chicken embryos." in: **Theriogenology**, Vol. 74, Issue 7, pp. 1161-1178.e1-8, (2010) ([PubMed](#)).



Western Blotting

Image 1. Western Blot detection against Immunogen (67.32 KDa) .