

Datasheet for ABIN526193
anti-SLC25A24 antibody (AA 1-66)[Go to Product page](#)

2 Images

Overview

Quantity:	100 µg
Target:	SLC25A24
Binding Specificity:	AA 1-66
Reactivity:	Human
Host:	Mouse
Clonality:	Monoclonal
Conjugate:	This SLC25A24 antibody is un-conjugated
Application:	Western Blotting (WB), ELISA

Product Details

Purpose:	Mouse monoclonal antibody raised against a partial recombinant SLC25A24.
Immunogen:	SLC25A24 (NP_037518.2, 1 a.a. ~ 66 a.a) partial recombinant protein with GST tag. MW of the GST tag alone is 26 KDa.
Sequence:	MLRWLRDFVL PTAACQDAEQ PTRYETLFQA LDRNGDGVVD IGLQEGLRN LGIPLGQDAE EKFTT
Clone:	2C4
Isotype:	IgG2a
Cross-Reactivity:	Human
Characteristics:	Antibody Reactive Against Recombinant Protein.

Target Details

Target:	SLC25A24
Alternative Name:	SLC25A24 (SLC25A24 Products)
Background:	Full Gene Name: solute carrier family 25 (mitochondrial carrier, phosphate carrier), member 24 Synonyms: APC1,DKFZp586G0123,SCAMC-1
Gene ID:	29957
NCBI Accession:	NM_013386

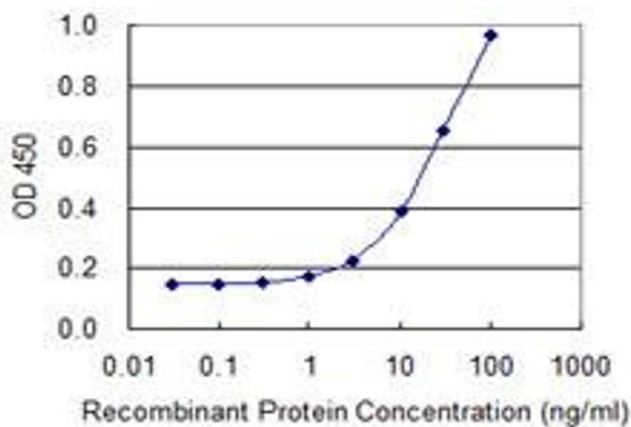
Application Details

Application Notes:	Optimal working dilution should be determined by the investigator.
Restrictions:	For Research Use only

Handling

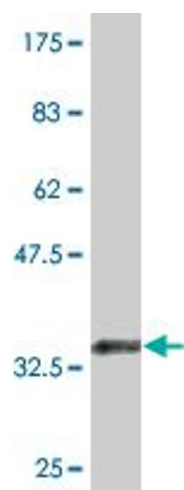
Buffer:	In 1x PBS, pH 7.4
Handling Advice:	Aliquot to avoid repeated freezing and thawing.
Storage:	-20 °C
Storage Comment:	Store at -20°C or lower. Aliquot to avoid repeated freezing and thawing.

Images



ELISA

Image 1. Detection limit for recombinant GST tagged SLC25A24 is 0.3 ng/ml as a capture antibody.



Western Blotting

Image 2. Western Blot detection against Immunogen (33 KDa) .