



[Go to Product page](#)

Datasheet for ABIN526196

## anti-NRBP1 antibody (AA 1-535)

### 1 Image

#### Overview

Quantity:	100 µg
Target:	NRBP1
Binding Specificity:	AA 1-535
Reactivity:	Human
Host:	Rabbit
Clonality:	Polyclonal
Conjugate:	This NRBP1 antibody is un-conjugated
Application:	Western Blotting (WB)

#### Product Details

Purpose:	Rabbit polyclonal antibody raised against a full-length human NRBP1 protein.
Immunogen:	NRBP1 (NP_037524.1, 1 a.a. ~ 535 a.a) full-length human protein.
Sequence:	MSEGESQTVL SSGSDPKVES SSSAPGLTSV SPPVTSTTSA ASPEEEEESE DESEILEESP CGRWQKRREE VNQRNVPID SAYLAMDTTE GVEVVWNEVQ FSERKKNYKQ EEKVRVAFDN LIQLEHLNIV KFHKYWADIK ENKARVIFIT EYMSSGSLKQ FLKKTCKKNHK TMNEKAWKRW CTQILSALSY LHSCDPPIIH GNLTCDTIFI QHNGLIKIGS VAPDTINNHV KTCREEQKNL HFFAPEYGEV TNVTTAVDIY SFGMCALEMA VLEIQNGGES SYVPQEAISS AIQLLEDPLQ REFIQKCLQS EPARRPTARE LLFHPALFEV PSLKLLAAHC IVGHQHMIPE NALEEITKNM DTSAVLAEIP AGPGREPVQT LYSQSPALEL DKFLEDVRNG IYPLTAFGLP RPQQPQQEEV TSPVPPSVK TPTPEPAEVE TRKVVLQCN IESVEEGVKH HLTLLKLED KLNRLHSCDL MPNENIPELA AELVQLGFIS EADQSRLTSL LEETLNKFNF ARNSTLNSAA VTSS

## Product Details

---

Cross-Reactivity:	Human
Characteristics:	Antibody reactive against mammalian transfected lysate.

## Target Details

---

Target:	NRBP1
Alternative Name:	NRBP1 ( <a href="#">NRBP1 Products</a> )
Background:	Full Gene Name: nuclear receptor binding protein 1 Synonyms: BCON3,FLJ27109,FLJ35541,MADM,MUDPNP,NRBP
Gene ID:	29959
NCBI Accession:	<a href="#">NM_013392</a>
Pathways:	<a href="#">Nuclear Receptor Transcription Pathway</a>

## Application Details

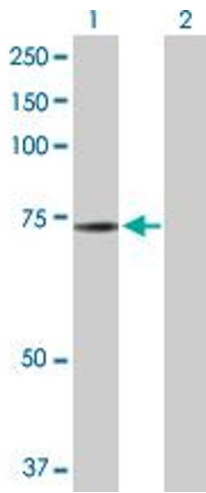
---

Application Notes:	Optimal working dilution should be determined by the investigator.
Restrictions:	For Research Use only

## Handling

---

Buffer:	In 1x PBS, pH 7.4
Handling Advice:	Aliquot to avoid repeated freezing and thawing.
Storage:	-20 °C
Storage Comment:	Store at -20°C or lower. Aliquot to avoid repeated freezing and thawing.



### Western Blotting

**Image 1.** Western Blot analysis of NRBP1 expression in transfected 293T cell line by NRBP1 MaxPab polyclonal antibody.

Lane 1: NRBP1 transfected lysate(59.80 KDa).

Lane 2: Non-transfected lysate.