

Datasheet for ABIN526202  
**anti-PSAT1 antibody (AA 262-370)**[Go to Product page](#)

## 1 Image

## Overview

Quantity:	100 µg
Target:	PSAT1
Binding Specificity:	AA 262-370
Reactivity:	Human
Host:	Mouse
Clonality:	Monoclonal
Conjugate:	This PSAT1 antibody is un-conjugated
Application:	ELISA

## Product Details

Purpose:	Mouse monoclonal antibody raised against a partial recombinant PSAT1.
Immunogen:	PSAT1 (NP_478059, 262 a.a. ~ 370 a.a) partial recombinant protein with GST tag. MW of the GST tag alone is 26 KDa.
Sequence:	GGAAAMEKLS SIKSQTIYEI IDNSQGFYVC PVEPQNRSKM NIPFRIGNAK GDDALEKRFL DKALELNMLS LKGHRVGGI RASLYNAVTI EDVQKLAAFM KKFLEMHQL
Clone:	1C2
Isotype:	IgG2b
Cross-Reactivity:	Human
Characteristics:	Antibody Reactive Against Recombinant Protein.

## Target Details

Target:	PSAT1
Alternative Name:	PSAT1 ( <a href="#">PSAT1 Products</a> )
Background:	Full Gene Name: phosphoserine aminotransferase 1 Synonyms: EPIP,MGC1460,PSA,PSAT
Gene ID:	29968
NCBI Accession:	<a href="#">NM_058179</a>
Pathways:	<a href="#">Warburg Effect</a>

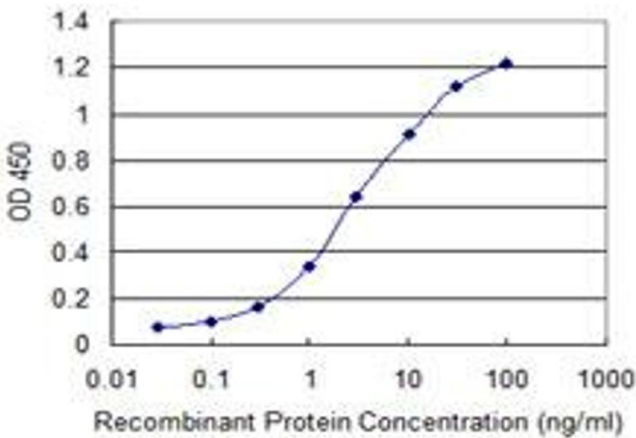
## Application Details

Application Notes:	Optimal working dilution should be determined by the investigator.
Restrictions:	For Research Use only

## Handling

Buffer:	In 1x PBS, pH 7.4
Handling Advice:	Aliquot to avoid repeated freezing and thawing.
Storage:	-20 °C
Storage Comment:	Store at -20°C or lower. Aliquot to avoid repeated freezing and thawing.

## Images



### ELISA

**Image 1.** Detection limit for recombinant GST tagged PSAT1 is 0.03 ng/ml as a capture antibody.