



[Go to Product page](#)

Datasheet for ABIN526288

anti-STOML2 antibody (AA 1-356)

3 Images

1 Publication

Overview

Quantity:	50 µg
Target:	STOML2
Binding Specificity:	AA 1-356
Reactivity:	Human
Host:	Mouse
Clonality:	Polyclonal
Conjugate:	This STOML2 antibody is un-conjugated
Application:	Western Blotting (WB)

Product Details

Purpose:	Mouse polyclonal antibody raised against a full-length human STOML2 protein.
Immunogen:	STOML2 (NP_038470.1, 1 a.a. ~ 356 a.a) full-length human protein.
Sequence:	MLARAARGTG ALLLRGSLLA SGRAPRRASS GLPRNTVVLV VPQQEAWVVE RMGRFHRILE PGLNILIPVL DRIRYVQSLK EIVINVPEQS AVTLDNVTLQ IDGVLYLRIM DPYKASYGVE DPEYAVTQLA QTTMRSELGK LSLDKVFRER ESLNASIVDA INQAADCWGI RCLRYEIKDI HVPPRVKESM QMQVEAERRK RATVLESEGT RESAINVAEG KKQAQILASE AEKAEQINQA AGEASAVLAK AKAKAEAIRI LAAALTQHNG DAAASLTVAE QYVSFAFSKLA KDSNTILLPS NPGDVTSMVA QAMGVYGALT KAPVPGTPDS LSSGSSRDVQ GTDASLDEEL DRVKMS
Cross-Reactivity:	Human
Characteristics:	Antibody reactive against mammalian transfected lysate.

Target Details

Target:	STOML2
Alternative Name:	STOML2 (STOML2 Products)
Background:	Full Gene Name: stomatin (EPB72)-like 2 Synonyms: HSPC108,SLP-2
Gene ID:	30968
NCBI Accession:	NM_013442
Pathways:	SARS-CoV-2 Protein Interactome , The Global Phosphorylation Landscape of SARS-CoV-2 Infection

Application Details

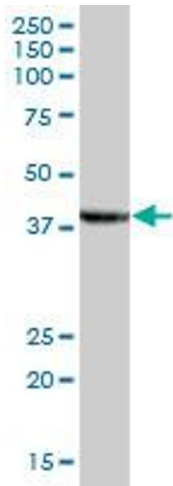
Application Notes:	Optimal working dilution should be determined by the investigator.
Restrictions:	For Research Use only

Handling

Buffer:	In 1x PBS, pH 7.4
Handling Advice:	Aliquot to avoid repeated freezing and thawing.
Storage:	-20 °C
Storage Comment:	Store at -20°C or lower. Aliquot to avoid repeated freezing and thawing.

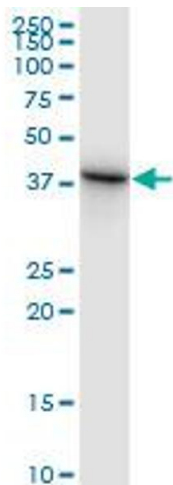
Publications

Product cited in:	Yeoh, Loh, Gooi, Singh, Gam: "Hydrophobic protein in colorectal cancer in relation to tumor stages and grades." in: World journal of gastroenterology : WJG , Vol. 16, Issue 22, pp. 2754-63, (2010) (PubMed).
-------------------	-----------------------------------------------------------------------------------------------------------------------------------------------------------------------------------------------------------------------------------------



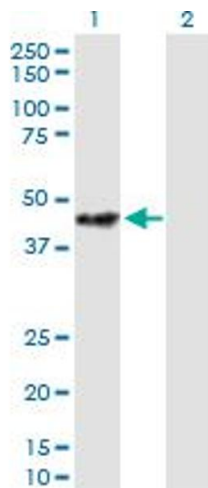
Western Blotting

Image 1. STOML2 MaxPab polyclonal antibody. Western Blot analysis of STOML2 expression in human placenta.



Western Blotting

Image 2. STOML2 MaxPab polyclonal antibody. Western Blot analysis of STOML2 expression in A-431.



Western Blotting

Image 3. Western Blot analysis of STOML2 expression in transfected 293T cell line by STOML2 MaxPab polyclonal antibody.

Lane 1: STOML2 transfected lysate(39.16 KDa).

Lane 2: Non-transfected lysate.