

Datasheet for ABIN526313  
**anti-DEF6 antibody (AA 1-631)**



[Go to Product page](#)

2 Images

Overview

Quantity:	50 µL
Target:	DEF6
Binding Specificity:	AA 1-631
Reactivity:	Human
Host:	Mouse
Clonality:	Polyclonal
Conjugate:	This DEF6 antibody is un-conjugated
Application:	Western Blotting (WB)

Product Details

Purpose:	Mouse polyclonal antibody raised against a full-length human DEF6 protein.
Immunogen:	DEF6 (NP_071330, 1 a.a. ~ 631 a.a) full-length human protein.
Sequence:	<p>MALRKELLKS IWYAFTALDV EKSGKVSQSQ LKVLSHNLYT VLHIPHDPVA LEEHFRDDDD                      GPVSSQGYMP YLNKYILDKV EEGAFVKEHF DELCWTLTAK KNYRADSNGN SMLSNQDAFR                      LWCLFNFLSE DKYPLIMVPD EVEYLLKKVL SSMSLEVSLG ELEELLAQEA QVAQTTGGLS                      VWQFLELFNS GRCLRGVGRD TLSMAIHEVY QELIQDVLKQ GYLWKRGHRL RNWAERWFQL                      QPSCLCYFGS EECKEKGRII PLDAHCCVEV LPDRDGKRCM FCVKTATRITY EMSASDTRQR                      QEWTAAIQMA IRLQAEGKTS LHKDLKQKRR EQREQRERRR AAKEEELLRL QQLQEEKERK                      LQELELLQEA QRQAERLLQE EEERRRSQHR ELQQALEGQL REAEQARASM QAEMELKEEE                      AARQRRIKE LEEMQQLQE ALQLEVKARR DEESVRIAQT RLLEEEEEKL KQLMQLKEEQ                      ERYIERAQQE KEELQQEMAQ QSRSLQQAQQ QLEEVQRNRQ RADEDVEAAQ RKLQASTNV                      KHWNVQMNRL MHPIEPGDKR PVTSSSFSGF QPPLLAHRDS SLKRLTRWGS QGNRTSPSPNS</p>

## Product Details

---

NEQQKSLNGG DEAPAPASTP QEDKLDPAPE N

Cross-Reactivity: Human

Characteristics: Antibody reactive against mammalian transfected lysate.

## Target Details

---

Target: DEF6

Alternative Name: DEF6 ([DEF6 Products](#))

Background: Gene: differentially expressed in FDCP 6 homolog (mouse)  
Synonyms: IBP, SLAT

Gene ID: 50619

NCBI Accession: [NM\\_022047](#)

## Application Details

---

Application Notes: Optimal working dilution should be determined by the investigator.

Restrictions: For Research Use only

## Handling

---

Format: Liquid

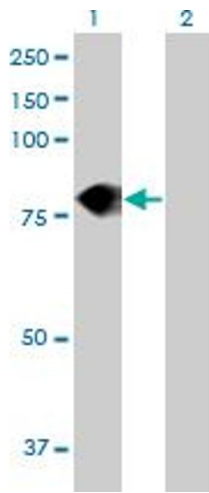
Buffer: No additive

Preservative: Without preservative

Handling Advice: Aliquot to avoid repeated freezing and thawing.

Storage: -20 °C

Storage Comment: Store at -20°C or lower. Aliquot to avoid repeated freezing and thawing.

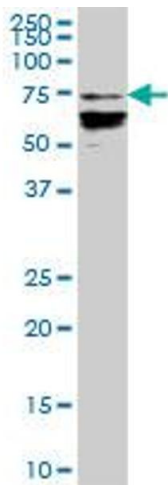


#### Western Blotting

**Image 1.** Western Blot analysis of DEF6 expression in transfected 293T cell line by DEF6 MaxPab polyclonal antibody.

Lane 1: DEF6 transfected lysate(69.41 KDa).

Lane 2: Non-transfected lysate.



#### Western Blotting

**Image 2.** DEF6 MaxPab polyclonal antibody. Western Blot analysis of DEF6 expression in human spleen.